



○Okinawa Prefectural Government offices outside Okinawa prefecture

Tokyo Office

〒102-0093 Tokyo, Chiyoda-ku, Hirakawa-cho 2-6-3  
Todofuken Kaikian, 10F

TEL.03-5212-9087 FAX.03-5212-9086  
Approximately 1 minute walk from Exit 9b of Nagatacho Station on the Tokyo Metro Namboku Line.



Osaka Office

〒530-0001 Osaka, Osaka-shi, Kita-ku, Umeda 1-3-2100  
Osaka Station Building 3, 21F

TEL.06-6344-6828 FAX.06-6346-1784  
Approximately 2 minutes walk from the East Exit of Kitashinchi Station on the JR Tozai Line.  
Approximately 5 minutes walk from Higashi Umeda Station on the Osaka Municipal Subway Tanimachi Line.



Nagoya Information Center

〒460-0008 Aichi, Nagoya, Naka Ward, Sakae 4-16-36  
5F, Hisaya Chunichi Building

TEL.052-263-3618 FAX.052-263-3619  
Approximately 4 minutes walk from Exit 1 of Yabacho Station on the Nagoya Municipal Subway Meijo Line.



The official social media account of the business facility promotion division has been launched!



○Okinawa Prefectural Government offices overseas

Beijing Office

Fortune Building Tower B Unit 1701, No. 3  
Dong San Huan Bei Road, Chaoyang District, Beijing

TEL.+86-10-6466-8679 FAX.+86-10-6466-6693  
10 minutes walk from Exit A of Liangmaqiao Station on Line 10 of the Beijing Subway.



Shanghai Office

〒200001 Room 1603, Block B, Huasheng Tower, No.398 Hankou Road, Huangpu District, Shanghai, China

TEL.+86-21-6351-0231 FAX.+86-21-6350-7369  
1 minute walk from Exit 4 of East Nanjing Road Station on Line 2 of the Shanghai Metro.

Hong Kong Office

Unit 1211, 12/F, Prosperity Millennia Plaza, 663 King's Road, North Point, Hong Kong

TEL.+852-2968-1006 FAX.+852-2968-1003  
3 minutes walk from Exit 3 of Hong Kong MTR Quarry Bay Station

Taipei Office

4E, No. 148 Songjiang Road, Zhongshan District, Taipei City

TEL.+886-2-2521-0376 FAX.+886-2-2542-7075  
3 minutes walk from Exit 8 of Songjiang Nanjing metro station on the Xinzhuang Line.

Singapore Office

1 North Bridge Road #22-09  
High Street Centre Singapore 179094

TEL.+65-6694-6408 FAX.+65-6694-5442  
5 minutes walk from Exit E of MRT City Hall.

Seoul Office

21, The Exchange Seoul 6F, Mugyo-ro, Jung-gu, Seoul, the Republic of Korea

TEL.+82-2-318-6330 FAX.+82-2-753-8751  
3 minutes walk from City Hall Station (Subway)

○Okinawa Prefecture Department of Commerce, Industry and Labor, IndustrialSite Promotion Division

Okinawa, Naha-shi, Izumizaki 1-2-2, Okinawa Prefectural Government Office, 8F  
TEL 098-866-2770 FAX 098-866-2846

3 minutes walk from Kencho-mae Station on Okinawa Urban Monorail.

<http://www.pref.okinawa.lg.jp/zone>  
E-mail:indus-pr@pref.okinawa.lg.jp



SDGs are promoted in Okinawa Prefecture.

March 2023

# 2023-2024 Okinawa Prefecture Industrial Site Guide

OKINAWA INDUSTRIAL LOCATION



## Connecting through Okinawa

Connecting Asia to Japan Business HUB "Okinawa"

Okinawa Special Economic Zone



# Five Advantages of Locating in Okinawa Prefecture

- Overview of the Business Environment in Okinawa Prefecture 1
- Living Environment in Okinawa Prefecture 3
- Map of Okinawa Main Island 5
- 1** Geographic features of Okinawa 7
- 2** International Distribution Network Ideal for Expansion in Asia 9
- 3** Okinawa is a vibrant place with talented people 13
- 4** Detailed overview of available aid 15
- 5** Special Taxation in a Special Economic Zone 20

Okinawa has gained traction as a business hub thanks to its advantageous location in the heart of East Asia and its excellent workforce. By highlighting these strengths, this guide aims to encourage businesses to consider expansion into the region.

- 6 Suitable locations for factories in Okinawa Prefecture 25
- 7 Overview of International Distribution Base and Industry Cluster Zone [ Uruma/Okinawa District ] 26
- 8 New industrial sites in Okinawa Prefecture 31
- 9 Comments from companies that have expanded into Okinawa Prefecture 34
- 10 An aviation-related business cluster focused on maintenance, the first in Japan. 35
- 11 The IT Industry in Okinawa 37
- 12 Okinawa's energy policy for creating a carbon-free society by FY2050 39
- 13 Okinawa Prefecture's bio industry 41
- 14 Research Institutes in Okinawa 42
- 15 Local Businesses (International Logistics Hub Industrial Agglomeration Area Naha) 45
- 16 Local Businesses (formerly the Special Free Trade Zone) 46
- 17 International Distribution Base and Industry Cluster Zone Uruma and Okinawa City MAP 49

## Overview of the Business Environment in Okinawa Prefecture

### (1) Okinawa, the crossroads of Asia where "People" and "Goods" meet

#### ■ Increasing Number of Visitors to the Region

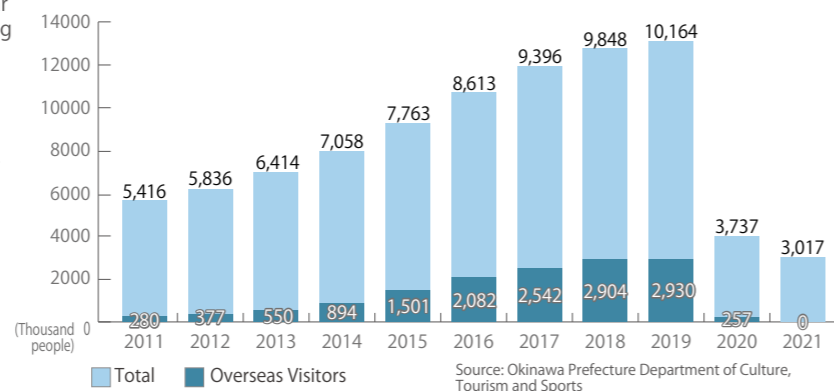
While the number of visitors have gone down in the year 2020 to 2022 due to the COVID-19 pandemic, the leading industry, that is tourism, surpassed the milestone of 10 million visitors on the calendar year for the first time in the year 2019, closing in on the number of visitors to Hawaii. Additionally, the highest number of foreign visitors to the island was also recorded in the same year.

Number of Visitors to the Region (2019)	10,163,900人
Of Which Overseas Visitors	2,930,000人
Tourism Revenue (2019)	748,388 million yen

Source: Okinawa Prefecture Department of Culture, Tourism and Sports

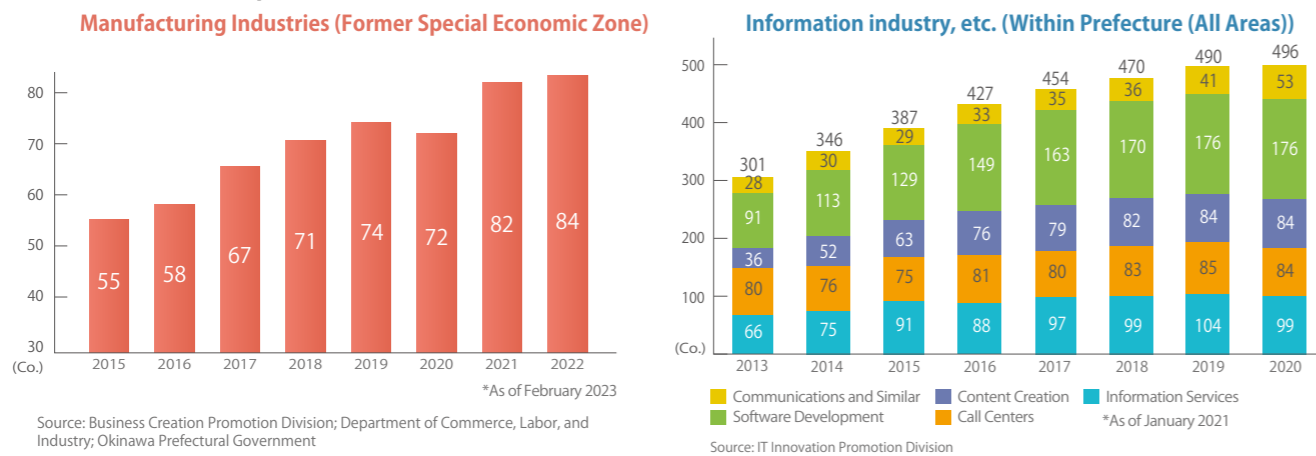
\*Number of visitors to Hawaii: 10,424,995 visitors (FY2019)

Progression of Number of Visitors to the Region (2011-2021)



Source: Okinawa Prefecture Department of Culture, Tourism and Sports

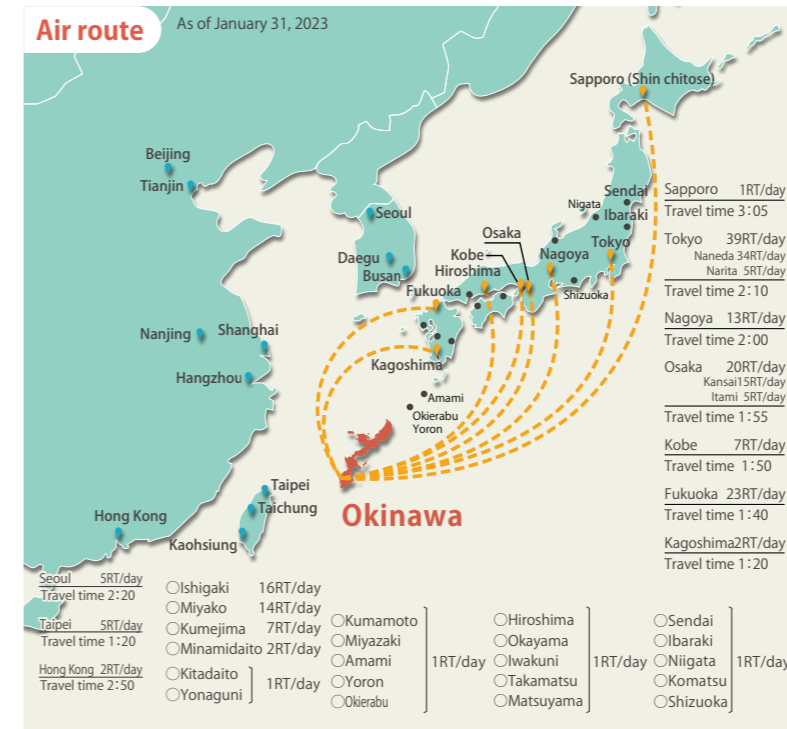
#### ■ Businesses continue to pour into Okinawa as a business hub even as the threat of COVID-19 looms



## (2) Extensive passenger flight network connecting Japan and Asia

Naha Airport's network of domestic flights is among the finest in Japan, and boasts the third highest number of cities on its scheduled routes. For international flights, in addition to routes to East Asia, including those to Taipei, Shanghai, Hong Kong, and Beijing, the airport has also recently expanded its network to Southeast Asia, introducing new routes to Bangkok and Singapore in February and November of 2017.

### ■ Naha Airport's commercial flight network



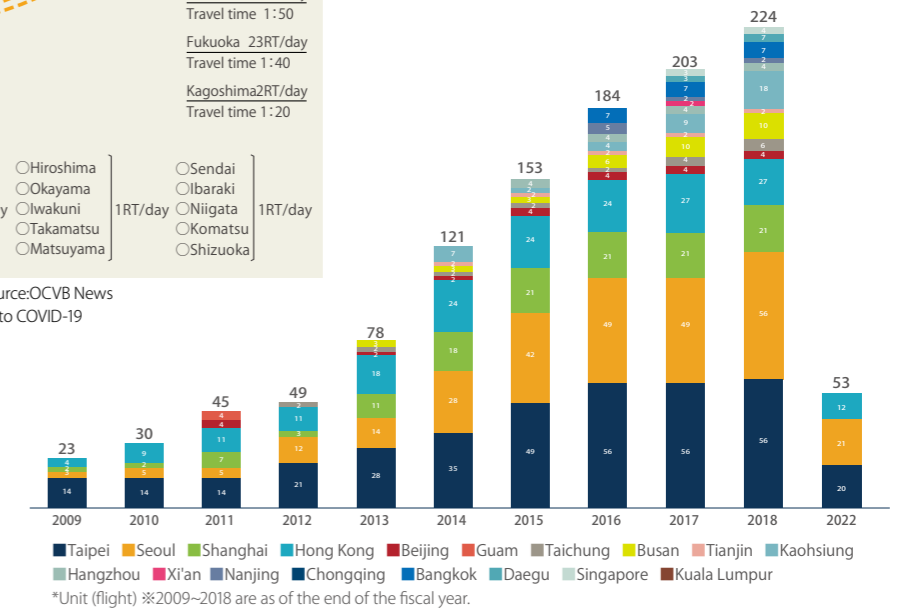
\* Travel times are estimates from Okinawa to destination Source:OCVB News  
\*Currently operating with reduced frequency or suspended due to COVID-19

### ■ Number of scheduled international passenger flights in service

The number of international passenger flights at Naha Airport has increased by approximately a factor of 10 since 2009. Since these passenger flights also carry out cargo shipments, transportation capabilities in the region are expected to continue growing.

Source: Okinawa Convention Bureau research

\*All services were suspended from 2019 to 2021 due to COVID-19



### ■ Number of scheduled domestic air routes (FY2021)

Ranking	Airport name	Number of cities serviced
1	Haneda Airport	52
2	Osaka Airport	34
<b>3</b>	<b>Naha Airport</b>	<b>33</b>
4	Shin chitose Airport	31
5	Fukuoka Airport	28
6	Narita Airport	21
6	Chubu Airport	21
8	Kansai Airport	17

Source: Annual Report on Air Transport Statistics, Ministry of Land, Infrastructure, Transport and Tourism

## (3) Companies finding success in Okinawa

### ■ Companies that have established operations in Okinawa

#### Transcosmos Co., Ltd.

Transcosmos is involved in call centers and business process outsourcing (BPO) in technical fields. We work with domestic aircraft manufacturers and aircraft interior manufacturers to design and develop (3D modeling, drawing, etc.) aircraft, including domestic jets. We also prepare technical certification documents to support the overall manufacturing process.



### ■ Collaborations with local business

#### NTI Corporation

NTI possesses unique precision technology which we use to fulfill wire cutting and polishing orders from companies within Okinawa. By taking advantage of Okinawa's climate, we are able to reduce temperature control costs. Together with our grinding technology, we are able to meet a wide variety of high-precision processing needs.

#### Toy Factory International Co., Ltd.

Toy Factory International Inc. develops and manufactures camping vehicles and more. We work with local Okinawan companies on the interior structures of our vehicles and body coatings. We develop products to meet the various demands of users both within Japan and beyond.



# Living Environment in Okinawa Prefecture

## ~ A fulfilling environment to live in "Okinawa" ~

### From the climate to the housing. How the numbers exemplify the ease of life in Okinawa

Okinawa is blessed with a warm and comfortable climate throughout the year, as well as housing conditions and abundant commercial facilities, and is full of vibrancy for both younger and working generations. Its great livability and workability are reflected in various rankings, demonstrating that it is a place with high potential that is the ideal location of a company.

#### ■ An Overview of Okinawa Prefecture

Location	Southwestern tip of the Japanese archipelago
Marine Area	1,000km East to West, 400km North to South
Number of Islands	160 Islands of Various Sizes (47 inhabited islands)
Area of Okinawa Main Island	1,207km <sup>2</sup>
Distance North to South of Okinawa Main Island	135km
Highest temperature	32.1 °C in July
Lowest Temperature	16.3 °C in January
Climate	Subtropical Climate and Warm Throughout the Year Compared to Other Prefectures

#### ■ An Outline of Okinawa

Category	National Ranking	Okinawa	Japan
Total Population	25	1,467,480 Person	126,146,099 Person
Youth Population (under 15) as Proportion of Total Population	1	16.6%	11.9%
Working Age Population (15-64) as Proportion of Total Population	5	60.8%	59.5%
Natural Rate of Population Change	1	2.4%	△0.7%

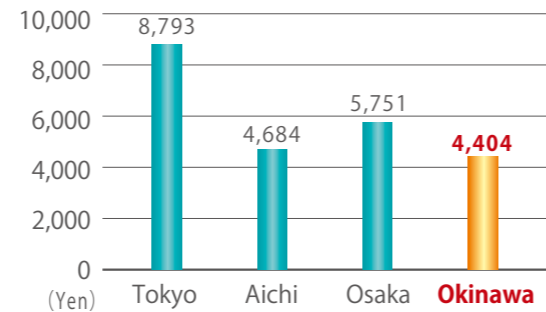
Source: Okinawa Prefecture Statistics Division, Statistics Bureau of Japan

#### ■ Changes in Rent by Floor Layout based on Average Rent

Prefecture	1 Room	2 Room	3 Room	Overall Average Rent
Tokyo	¥ 68,903	¥ 86,334	¥ 93,378	¥ 72,742
Aichi Prefecture	¥ 51,243	¥ 58,379	¥ 60,961	¥ 54,907
Osaka Prefecture	¥ 55,927	¥ 69,932	¥ 75,102	¥ 60,852
<b>Okinawa Prefecture</b>	<b>¥ 45,182</b>	<b>¥ 54,385</b>	<b>¥ 62,858</b>	<b>¥ 53,040</b>

Source: Zenkankyo Kyosaikai Co Ltd. From its "Small Sum Short Term Insurance Contract Record" (As of December 2022)  
※ 1 Room includes 1K, 1DK, and 1LDK layouts.

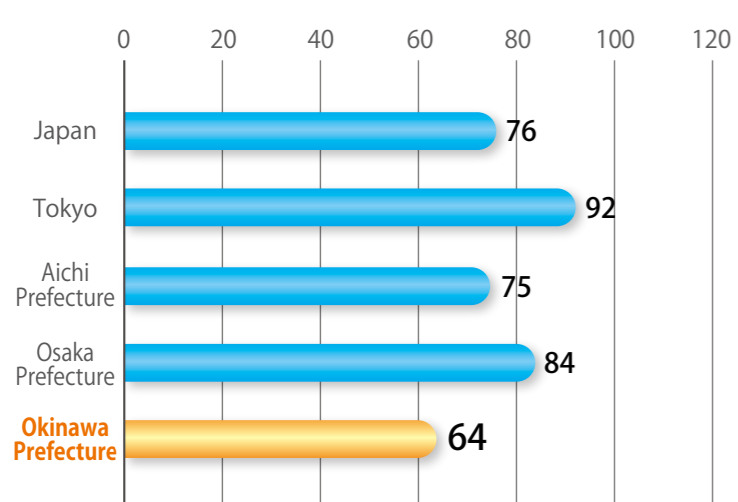
#### ■ Private Rental Housing Cost of Rent (Per 1 Month and 1 tsubo (~3.30 square meter) area)



Source: Statistics Bureau of Japan "Statistical Observations of Prefectures 2022"

#### ■ Work/School Commuting Time

(Unit: Minutes)



Source: Results from the 2021 Survey on Time Use and Leisure Activities (Statistics Bureau, Ministry of Internal Affairs and Communications)

#### ■ Proportion of 'U-Turners' Among Individuals Who Have Moved Outside Prefecture

National Average	43.7%
<b>Okinawa</b>	<b>70.9%</b>
Toyama	55.3%
Shizuoka	54.6%

Source: Population Movement Study by the Ministry of Health, Labour and Welfare

#### ■ Number of Large-Scale Retail Stores (Per 100,000 Population)

Japan	13.89 Stores
<b>Okinawa</b>	<b>17.51 Stores</b>
Kyoto	16.31 Stores
Osaka	15.74 Stores

Source: Statistics Bureau of Japan "Statistical Observations of Prefectures 2022"

#### ■ Prefectures with high sustainability factors

Rank	Previous year	Prefectures	happiness level	Life satisfaction	Attachment level	Settlement level of motivation	Sustainability
1	1	<b>Okinawa</b>	<b>77.4</b>	<b>69.6</b>	<b>85.9</b>	<b>82.9</b>	<b>78.9</b>
2	3	Fukuoka	73.9	71.0	83.0	81.8	77.4
3	9	Miyazaki	74.9	69.2	82.2	76.5	75.7
3	12	Kagoshima	75.4	68.6	82.4	76.6	75.7
5	14	Kagawa	71.6	69.2	79.8	76.7	74.3

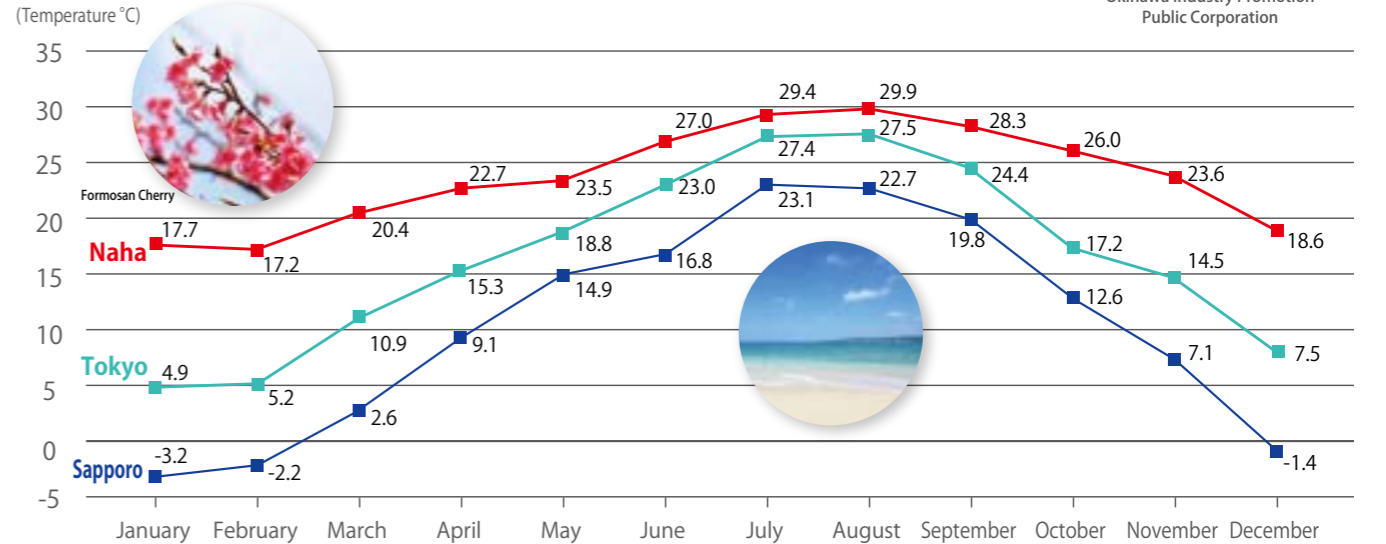
Source: "Regional SDGs Survey 2022" published by the Brand Research Institute

#### ■ Average temperature

Cherry blossoms in Japan usually bloom earliest in Okinawa, in January. The marine leisure season is welcomed in March as beaches open around the prefecture. Okinawa is green even in winter, allowing golf throughout the year.



Okinawa Industry Promotion Public Corporation



Source: Japan Meteorological Agency (2022)

#### A comfortable climate with less hay fever!

Pollinosis, or hay fever, now affects about 1 in 4 people in Japan, earning it the title of a "national disease." Its primary cause is pollen from cedar and cypress trees. These trees do not readily grow in the subtropical oceanic climate of Okinawa, and the resulting low levels of dispersed pollen create a comfortable environment with little pollinosis. The Cabinet Office is conducting anti-pollinosis virtual telework tours and other activities in Okinawa to attract attention to the ease of working in the prefecture.



#### Many typhoons = A typhoon-resistant Okinawa

Okinawa lies along the route of typhoons that occur in the southern seas, and many typhoons approach or pass by every year. Because of this, however, storm-resistant architectural styles become common long ago, and efforts to emphasize disaster mitigation measures are made in infrastructure. A feature of this is that power outages due to typhoon are relatively small in effect. Moreover, due to topography and geographical conditions, among Japan's prefectures Okinawa experiences few sediment-related disasters, river floods, and floods.



#### ■ Okinawa as seen from 100 metrics (March 2022 edition)

Item	Japan	Okinawa	Rank
<b>Rate of natural change in population (per 1,000 persons)</b>	<b>△4.2%</b>	<b>1.70%</b>	<b>1</b>
Rate of social change in population	-	0.05%	8
Industrial structure (primary industry composition ratio)	1.05%	1.35%	27
Industrial structure (secondary industry composition ratio)	27.64%	17.89%	44
Industrial structure (manufacturing industry composition ratio)	21.90%	4.31%	47
<b>Industrial structure (construction industry composition ratio)</b>	<b>5.67%</b>	<b>13.51%</b>	<b>1</b>
<b>New establishment (workplaces)</b>	<b>5.89%</b>	<b>8.18%</b>	<b>1</b>
Rate of business closures (workplaces)	7.72%	8.63%	3
Female employment rate	50.73%	52.25%	7
Full unemployment rate	2.80%	3.30%	2

※%: Per mille = part per thousand

Source: Okinawa Prefecture Statistical Data website

Okinawa is the only prefecture with a population that has been growing naturally for the nearly 40 years since the first survey was conducted.



Okinawa as seen from 100 metrics



# Map of Okinawa Main Island

~Okinawa: Where resorts and businesses thrive alongside each other~

Located at the southernmost tip of Japan and surrounded by magnificent seas on all sides, Okinawa is one of the leading resort destinations in Asia that attracts tourists from Japan and abroad. In recent years, Okinawa has also been attracting attention as a new base for businesses in Asia as a result of its geographical advantages. It is also popular as an ideal location for "workations," a new style of working while one is enjoying a vacation, due to its excellent access to a variety of resort amenities.



Image photo



Kouri Bridge



Image photo



Image photo



Hijio Falls



Image photo



Okinawa Institute of Science and Technology Graduate University (OIST)



National Institute of Technology, Okinawa College



Okinawa Churaumi Aquarium

Okinawa Expressway  
Naha Airport Expressway



Image photo



Naha International Container Terminal



Okinawa IT Shinryo Park



Umikaji Terrace Senagajima



International Logistics Hub Integrated Industrial Area, Naha District



International Logistics Hub Integrated Industrial Area, Uruma/Okinawa District (Around 27km/45-minute drive from Naha Airport)



Sefa-utaki





# 1 Geographic features of Okinawa

In recent years, BCP and DR (Disaster Recovery) measures in preparation for unpredictable states of emergency, such as earthquakes, tsunami, heavy snow, and other natural disasters and accidents, are indispensable. Risk Diversification has gained attention as a popular measure in this regard.



## Point 1 Distant from the mainland, there is a low risk of simultaneous disaster occurrence

Due to its remote location, far from the mainland, Okinawa is considered to have a relatively low risk of simultaneous disaster occurrence in the event of a large-scale disaster on the mainland.

Some companies have actually moved their bases of operations to Okinawa, or placed a base for data backup and BCP measures here, after large scale disasters.

The government also sees Okinawa as a valuable base for risk diversification, with some government offices adopting Okinawa as the place for their data backup centers.

Okinawa's proximity to the mainland also has the advantage of speeding up disaster recovery. Okinawa is an ideal location for disaster countermeasure system backups and dual centers (operation centers that operate simultaneously).



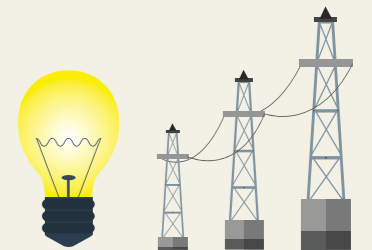
## Point 2 An extensive air transportation and high-speed distribution network that can quickly rush in to help during times of emergency

Naha Airport has a complete and fully prepared network of passenger airline flights linking major domestic cities to enable immediate response during times of emergency or difficulty. With a 24-hour operational, high-speed distribution network in place with Naha Airport as its hub, product supplies and procurement of parts can be maintained without loss of time.



## Point 3 Power Distribution System Independent From the Mainland

Okinawa has stable power distribution based in thermal power generation which is independent from the Japanese mainland. This makes favorable conditions for mitigating and diversifying the risk of halted operations or data loss due to power shortages.

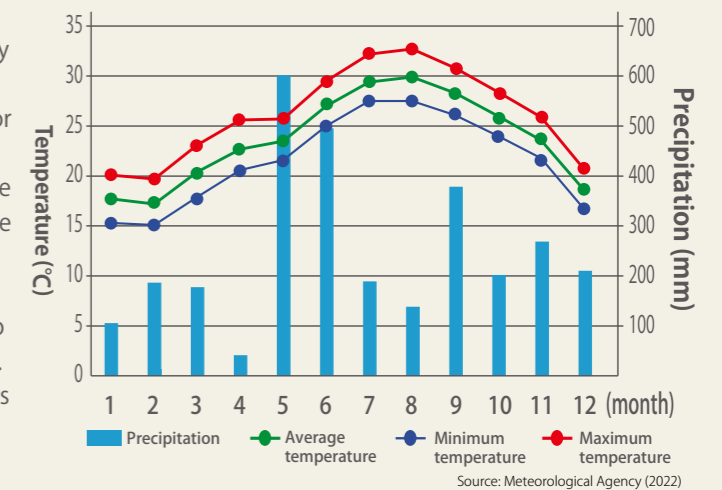


## Point 4 Consistent, comfortable climate!

Annual average temperature **23.7°C**



Okinawa Prefecture is the only subtropical region in Japan and has a mild climate year-round which generally has no snowfall. In some cases, you'll spend less on electricity costs due to less frequent need for heating. For example, the required environmental temperature for a clean room in semiconductor manufacturing is said to be 23 degrees Celsius, which is near the average temperature for Okinawa. Temperature fluctuations throughout the day are markedly smaller here than in other prefectures as well, and this adds the benefit of making it possible to reduce the costs of maintaining a constant temperature. In this way, a climate with small temperature differences is another unique advantage of being located in Okinawa.



### VOICE

#### To protect the trust and responsibility that comes with a stable supply.

In order to avoid risks to production that can occur due to major disasters, power outages, or damages due to misinformation related to nuclear power plant accidents, we decided to diversify our production bases from the main island to Okinawa, where we started operations by establishing new factories. By establishing a base of operations in Okinawa, we eliminated any anxieties over the risk of simultaneous disasters occurring in two separate locations, and by creating a stable and sustainable supply of product, we have been able to maintain our customers' trust in ourselves, and our responsibilities towards them. Furthermore, thanks to unique aid and support packages provided by Okinawa Prefecture, as well as leasing plans for factories, we have benefitted greatly from the utilization of the infrastructure provided by this fully developed international distribution hub, the merits of which have smoothly translated into positive sales figures.

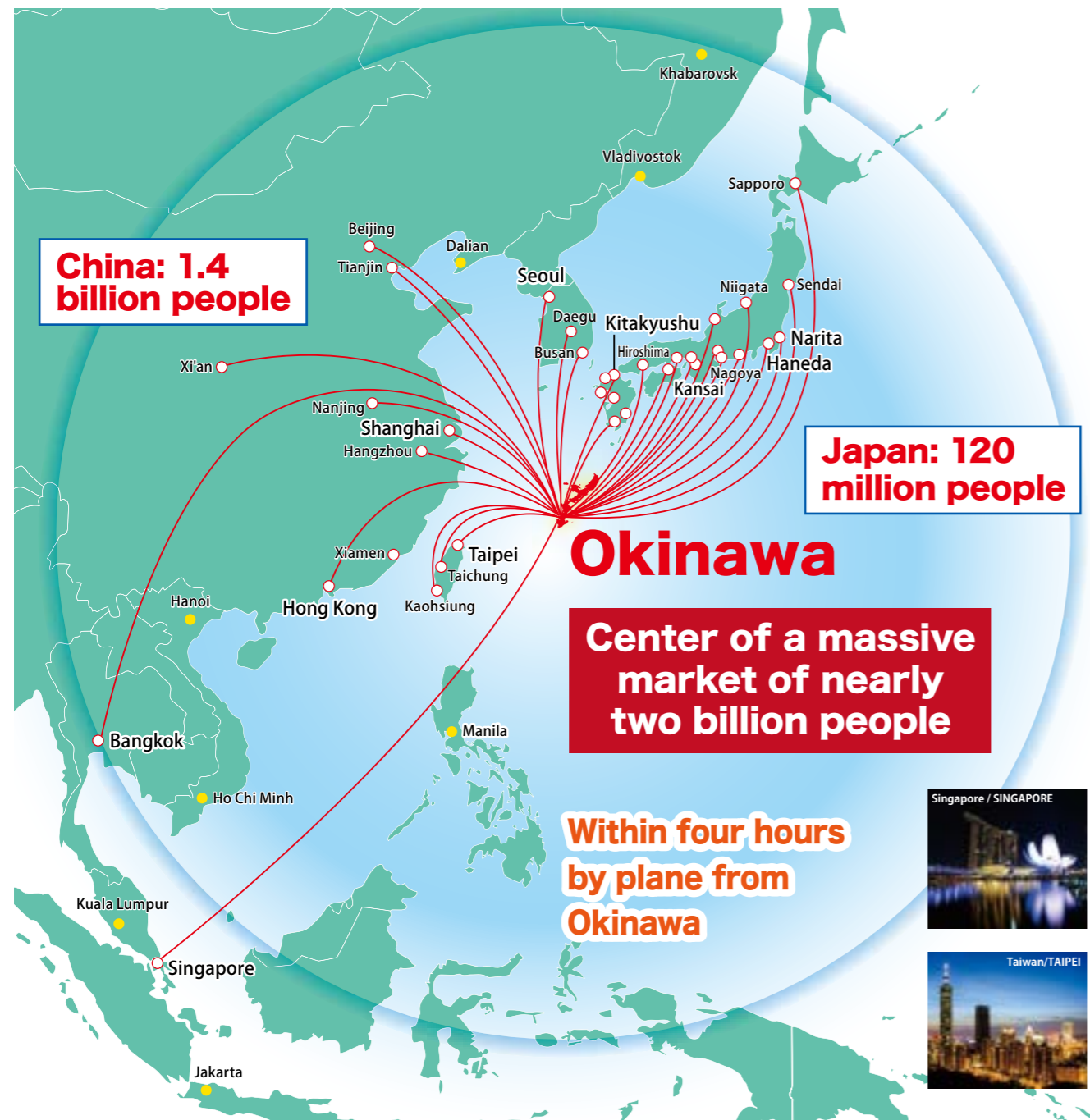
Tenant companies of leased factories



# 2

## International Distribution Network Ideal for Expansion in Asia

With a geographical advantage located at the heart of East Asia, Okinawa beats with energy and has been garnering attention as a vital business hub interlocked with the Asian economy. In order to develop Okinawa as an international business city connecting Japan and Asia, Okinawa Prefecture is working on building an international logistics network centered around Naha Airport and Naha Port, Okinawa's sky and sea gateways. This distribution hub will be excellent for companies looking to expand in Asia.



\*Due to the effects of COVID-19, some routes are suspended. (As of January 2021)  
 \*Sources:  
 \*Population Estimates, Ministry of Internal Affairs and Communications, Statistics Bureau (January 2021 report)  
 \*Essential Data on the People's Republic of China, Ministry of Foreign Affairs of Japan's website (as of October 7th, 2020)  
 \*Seeing ASEAN (August 2020) and "ASEAN Today" (2019), Ministry of Foreign Affairs of Japan

# 2-1 Naha Airport, an airport that connects major cities in Japan and Asia

### (1) An air logistics network that takes advantage of our extensive network of flights

Okinawa Prefecture is developing an air logistics network centered on Naha Airport as the international hub of Okinawa by taking advantage of its geographical location in the center of East Asia and its extensive network of flights. Starting from 2021, we are shifting from the cargo-only aircraft-centric model in the past to a model that also utilizes cargo space on passenger flights bound for Naha Airport in addition to cargo-only aircraft. We are also building a new air logistics network that connects the Tokyo metropolitan area and other regions of Japan with cities throughout Asia so as to serve multiple destinations at high frequencies. With this transition, we aim to take advantage of the dynamism of the growing Asian market to further promote the export of Okinawan products and become a distribution center for local specialties from all over Japan. At the same time, we hope to establish an international logistics hub that can meet the new transportation demands of e-commerce, which has been rapidly expanding in recent years.

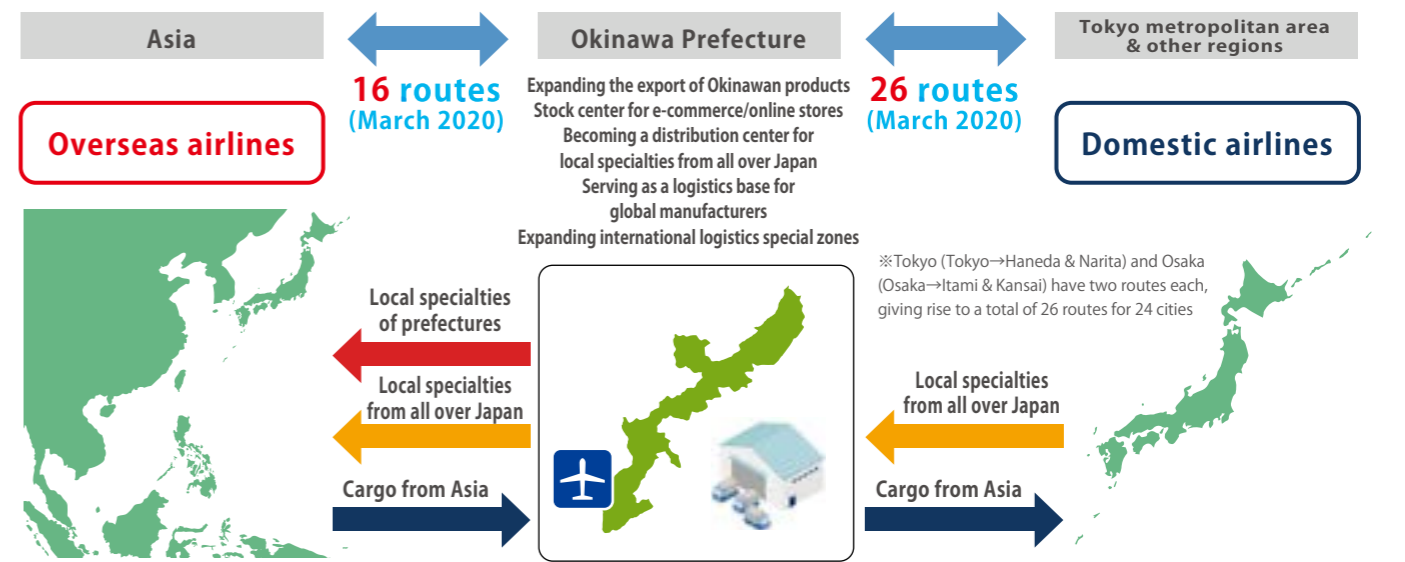
### Volume of international cargo handled at Naha Airport and other airports (in 2019)

Ranking	Airport name	Volume of international cargo handled (tons)
1	Narita Airport	2,045,279
2	Kansai Airport	742,155
3	Haneda Airport	562,354
4	Chubu Airport	172,313
5	Naha Airport	100,024
6	Fukuoka Airport	46,999

Source: West Japan Civil Aviation Bureau website, East Japan Civil Aviation Bureau website, Japan Civil Aviation Bureau

## Okinawa International Logistics Hub

- Key features**
- ◆ Construction of a logistics network utilizing belly flights (freight transportation via passenger planes) in addition to cargo planes
  - ◆ Taking advantage of the dynamism of Asia, which continues to grow
  - ◆ Catering to new logistics demands such as e-commerce



- Effects**
- ◆ Establishment of a high-performance international logistics hub with low costs, improved convenience, and a diversified logistics network
  - ◆ Establishment of sales channels for local specialties of prefectures and from all over Japan, and allowing for further industrial integration





# 2-2 Naha Port : An international trade hub linking Japan and Asia

## (1) Marine transport network connecting Japan with other countries

As the maritime gateway for Okinawa, Naha Port has 7 regular international container routes serving Taiwan, North America, China, South Korea, and the Philippines and 30 regular and irregular domestic routes (of which 10 are intraprefectural) featuring RORO, general cargo, and other ships serving such locations as Tokyo, Osaka, Kobe, Hakata, and Kagoshima.

Naha Port is the 16th largest in Japan for foreign trade, 3rd for domestic trade, and 7th for combined trade in terms of the total number of containers handled.

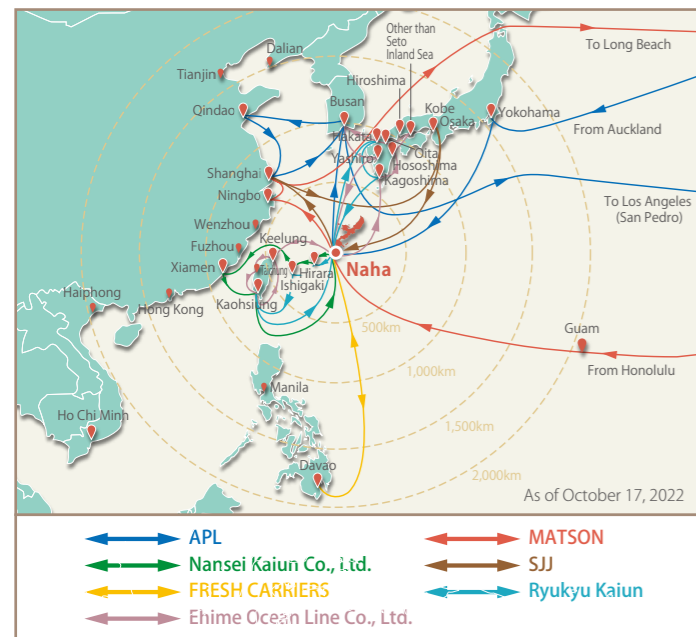
### Container Handling Volume (TEU) Ranking by Port (Preliminary figures 2021)

Foreign trade container handling volume			Domestic trade container handling volume			Total container handling volume		
Rank	Port name	TEU*	Rank	Port name	TEU*	Rank	Port name	TEU*
1	Tokyo (Keihin)	4,325,956	1	Kobe (Hanshin)	679,167	1	Tokyo (Keihin)	4,862,841
2	Yokohama (Keihin)	2,571,663	2	Tokyo (Keihin)	536,885	2	Yokohama (Keihin)	2,861,307
3	Nagoya	2,539,538	3	Naha	512,628	3	Kobe (Hanshin)	2,823,776
4	Kobe (Hanshin)	2,144,609	4	Osaka (Hanshin)	297,581	4	Nagoya	2,725,596
5	Osaka (Hanshin)	2,128,089	5	Yokohama (Keihin)	289,644	5	Osaka (Hanshin)	2,425,670
6			6	Nagoya	186,058	6	Hakata	957,056
7			7	Kagoshima	161,774	7	Naha	592,929
16	Naha	80,301						

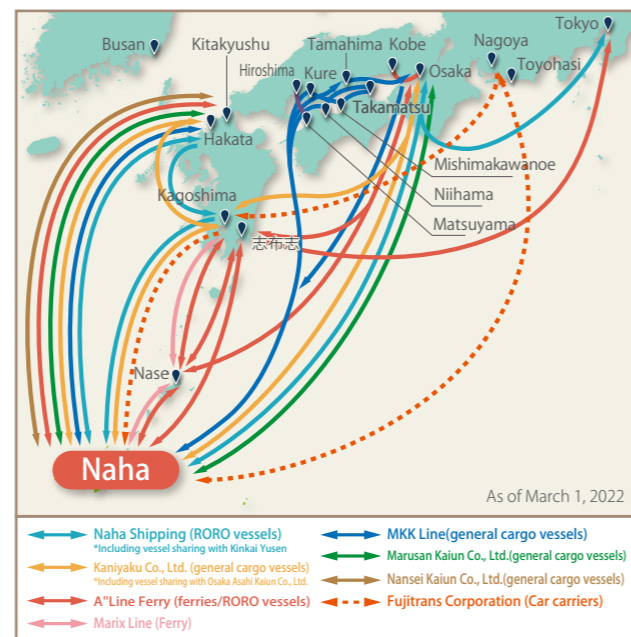
\*1 TEU = 1 20-foot container

Source: Port statistics (Current situation of amount of cargo handled in the port, etc.)

### Naha Port regular routes (overseas)



### Naha's regular and irregular shipping routes (out of prefecture)



### Naha's regular foreign trade shipping routes (as of January 2023)

The most recent version can be found at Naha Port's managing association website (<http://www.nahaport.jp>).



Region	Port of Call	Ship Type	Gross Tonnage (International Tonnage)	Frequency	Time of Passage	Operator
North America	Los Angeles (San Pedro) — Auckland — Yokohama — Naha — Busan-Qingdao — Shanghai-Busan — Los Angeles (San Pedro)	Full container	82,794	1/ wk	15d	APL
	Long Beach — Honolulu — Apra (Guam) — Naha — Ningbo — Shanghai — Long Beach	Full container	32,575	1/ wk	14d	MATSON
China	Shanghai - Osaka - Kobe - Naha - Shanghai	Full container	9,994	1/ wk	96hr	SJJ
Asia	Davao (Philippines) — Naha — (Hakata) — (Kobe) — Davao (Philippines)	Freezer container	9,340	1 / 2wk	72hr	FRESH CARRIERS
Southeast Asia (Taiwan)	*Sakishima route extension Naha — Hirara — Ishigaki — Kaohsiung — Naha — Hakata — Kagoshima — Naha	RORO ships	10,184	1/ wk	36hr	RKK Line
	*Sakishima route extension Naha — Hirara — Ishigaki — Xiamen — Kaohsiung — Naha	General cargo ship	1,488	1/ wk	93hr	NAMSUNG
	Naha - Shibushi - Hososhima - Matsuyama - Oita - Busan - Yatsushiro - Naha - Keelung - Taichung - Kaohsiung - Naha	Full container	9,443	0.5/ wk	2d	Ehime Ocean Line

\*Final ports are in red \*Ports of call in ( ) are irregular ports

## (2) Measures to strengthen functionality as an international logistics hub

Measures are being implemented to increase the volume of cargo handled, with the aim of realizing a international maritime logistics hub connecting domestic markets with East Asia.

### 1 Facility maintenance

The Naha Port International Container Terminal has been fitted with gantry cranes and reefer power supply facilities, and the Naha Port Logistics Hub is being developed on an adjacent site.



Naha Port Logistics Hub

### Naha Port Logistics Hub

Currently, at Naha Port, which handles the majority of Okinawa Prefecture's port cargo, the development of the Naha Port General Distribution Center is underway. We aim to increase the amount of cargo handled by promoting the collection and creation of cargo, improving the sophistication of our logistics, and focusing creating new value-adding industries, such as distribution and processing. The first phase of the Naha Port Integrated Logistics Center opened in May of 2019, and we are currently analyzing the possibilities for the commercialization of the second and third phases of the Integrated Logistics Center.



Naha Port Logistics Hub Phase 1 renewal site [2.6 ha] Scheduled to open in May 2019 (Basic design: 3 stories, dedicated footprint area about 3.2ha)

\*The location of phases 2 and 3 of the Integrated Logistics Center is under consideration

Floor specifications of logistics building	Dedicated footprint area	Tenants	Handled cargo (Results)
3rd floor: dry goods only	approximately 10,495㎡	Okinawa Koun Co., Ltd., Maruei Logistics Co., Ltd., Ryukyus Logistics Co., Ltd.,	Food, Beverages, General Goods Building
2nd floor: frozen, refrigerated, dry goods	-	Okinawa Prefecture Black Sugar Cooperative, Okinawa Kyuso Co., Ltd. Ryukyu Freight Forwarders Co., Ltd.,	Okinawa black sugar, inshore tuna, etc.
1st floor: frozen and refrigerated goods only	-	Nichirei Logistics Kyushu, Inc.	Various frozen and refrigerated foods

### 2 Initiatives to increase foreign cargo

Support systems such as the Naha Port Transport Efficiency Support Project have been set up to encourage companies to ship more cargo through Okinawa and to establish new sea routes.

Scan the QR code for details on the Naha Port Transport Efficiency Support Project ▶

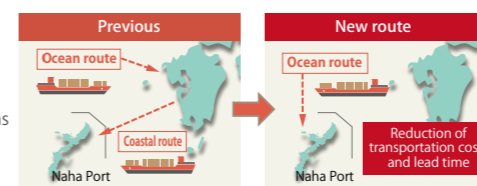


### Overview of the FY2023 Naha Port Transport Streamlining Support Project

- Objective: The Naha Port Transport Streamlining Support Project aims to promote the expansion of international container cargo and streamline transport using Naha Port. It will achieve this by helping operators shift to more efficient transportation patterns for international container cargo via Naha Port.
- Target operators: Shippers and logistics companies transporting international container cargo
- Support:
  - Financial support for increased costs (marine and land transportation expenses, etc.) that arise as a result of shifting to a transportation route via Naha Port
  - The maximum financial assistance is ¥300,000 for the first stage and ¥1,000,000 for the second stage. ¥100,000 is provided at each stage as a participation subsidy for a total of ¥1,500,000
  - \*A second stage of transportation can start if the project is confirmed to be effective at the end of the first stage.
- Main requirements for support:
  - 1) Containers must be imported or exported through Naha Port
  - 2) New transportation routes must use Naha Port and follow transport patterns A, B, C, or D (see chart below).
  - 3) Applicants must meet the project's objectives and be planning to use Naha Port continuously
- Transport patterns eligible for support

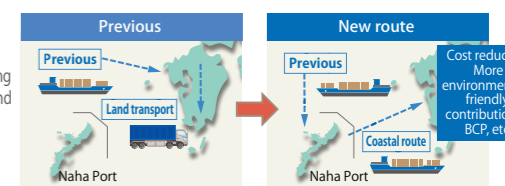
#### Pattern A

A shift to importing directly into Naha Port instead of transporting overseas cargo to Naha Port via a mainland port



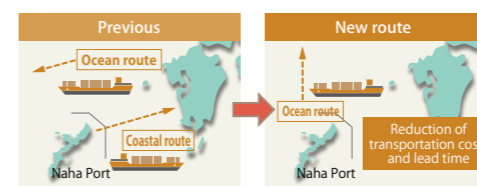
#### Pattern B

A shift to importing cargo at Naha Port and then transporting it to a local port on the mainland instead of importing it to a major mainland port and then transporting overseas cargo over a long distance by land



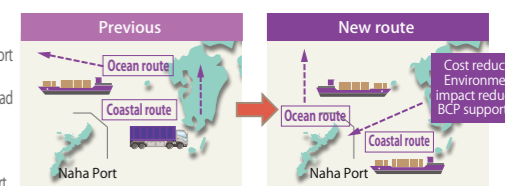
#### Pattern C

A shift to exporting directly from Naha Port instead of sending cargo from Naha Port overseas via a mainland port.



#### Pattern D

A shift to moving cargo to Naha Port from a local port on the mainland and then exporting overseas instead of transporting cargo over a long distance from local ports on the mainland and then exporting overseas via a major mainland port

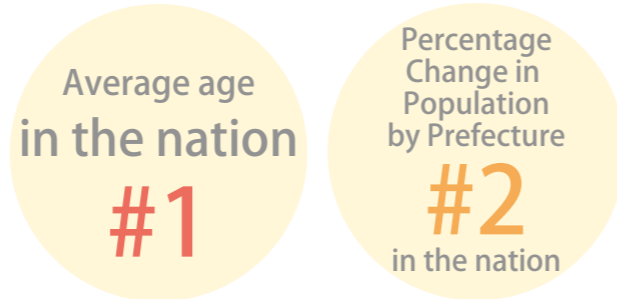


Inquiries: Naha Port Management Association, Planning and Construction Department, Minato Promotion Division TEL 098-868-2582



# 3

## Okinawa is a vibrant place with talented people



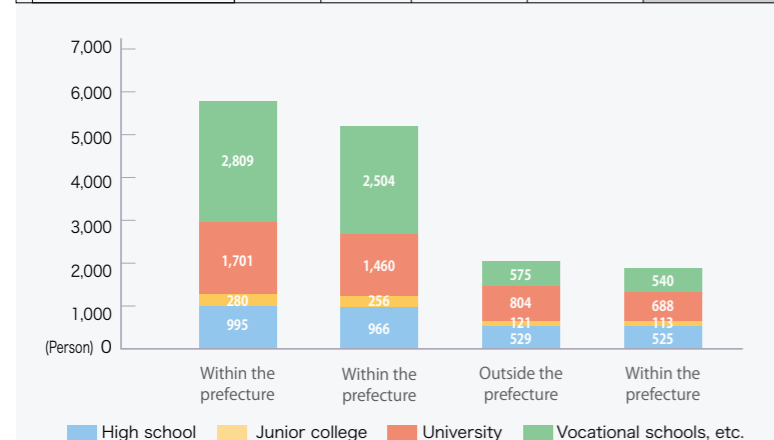
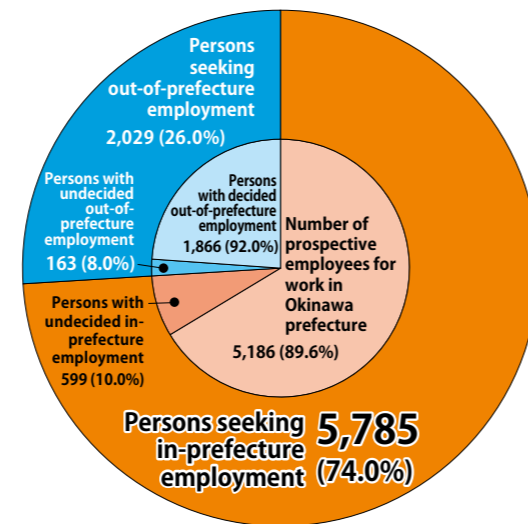
As we move into an era of population decline, Okinawa Prefecture is still experiencing population growth. Okinawa is also Japan's youngest prefecture, with the average age by prefecture the lowest at 43.5 years old and Japan's highest proportion of young people (ages 0 to 14) at 16.6%. Each year, a large number of students enroll in the prefecture's industrial education institutions, where the human resources who will lead the manufacturing industry of the future are trained.

### 74% of new graduates want to find employment inside of Japan.

■ Data on the employment status of new graduates (job seekers) in the prefecture.

	High school	Junior college	University	Vocational schools, etc.	Total
#of graduates (people)	16,862	572	3,804	3,862	25,100
#of job seekers (people)	1,524	401	2,505	3,384	7,814
Within the prefecture	995	280	1,701	2,809	5,785
Outside the prefecture	529	121	804	575	2,029
#of people with unofficial job offers (people)	1,491	369	2,148	3,044	7,052
Within the prefecture	966	256	1,460	2,504	5,186
Within the prefecture	525	113	688	540	1,866
Unofficial job offer rate	97.8%	92.0%	85.8%	90.0%	90.2%
Within the prefecture	97.1%	91.4%	85.8%	89.1%	89.6%
Within the prefecture	99.2%	93.4%	85.6%	93.9%	92.0%

■ Employment status of new graduates



Source: Employment Security Division, Employment Security Department, Okinawa Bureau of Labor Graduation in March 2022 (as of March 2022)

### Capacity of universities, technical colleges, prefectural technical high schools, etc.

	Name of school	Capacity	Name of school	Capacity
North	National Institute of Technology, Okinawa College (Regular Course)	160	Nago Commercial and Technical High School	200
Central	Okinawa Prefectural Mirai Senior High School of Technology	320	Misato Technical High School	280
	University of the Ryukyus (Faculty of Engineering)	350		
South	Urasoe Technical High School	280	Naha Technical High School	320
	Nambu Technical High School	120	Okinawa Technical High School	320
Remote Islands	Yaeyama Commercial and Technical High School	160	Miyako Technical High School	120
Total for high schools		2,120	Overall total	2,630

### Polytechnic colleges

Name of school	Capacity
Okinawa Polytechnic College (Faculty of Engineering)	130
Gushikawa Polytechnic College	85
Urasoe Polytechnic College	120
Total	335

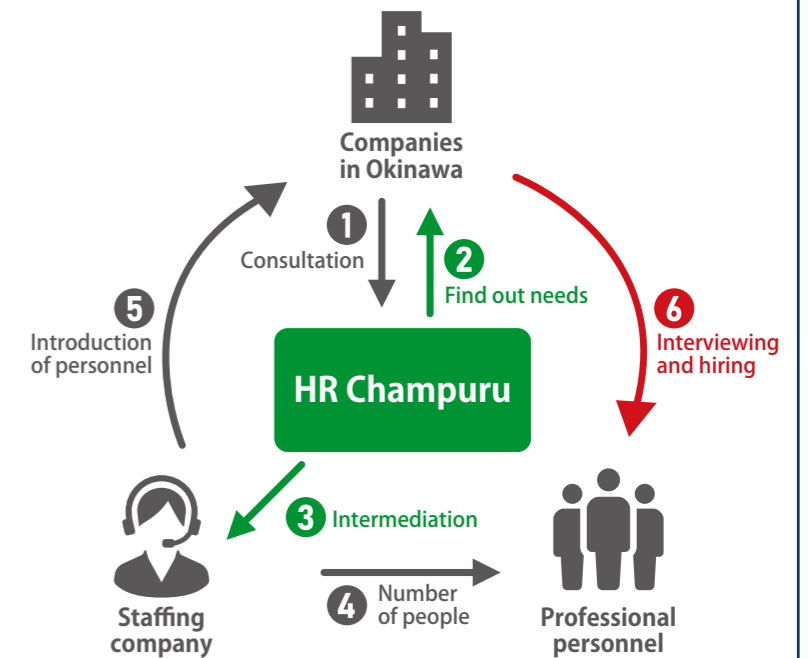
\*Okinawa Polytechnic Development Promotion Center also has a Faculty of Engineering.

Source: Okinawa Prefectural Board of Education, schools' websites

### Initiatives to secure personnel

#### What is HR Champuru (Okinawa Professional Workforce)?

HR Champuru is the nickname for the Okinawa Professional Workforce Strategy Center. We carefully identify challenges faced by companies and work together with various support organizations to connect the company with professional personnel that are perfect for the job! Get in touch for a free consultation.



#### Examples of experiences of companies in Okinawa

Profitability increased	<b>Awamori distiller in Okinawa</b>	<b>Alcoholic beverages industry</b>	Hired an employee familiar with social media and other online media management to attract more customers online and improve the company's online store
<b>Professional employee hired by the company</b>	<b>Business issue</b>	<b>Professional employee's role</b>	<b>Benefit</b>
Previous role Freelance advisor on social media and attracting customers online Hired Advisor for social media and other online media	With interest in sake increasingly dwindling among young people, the company wanted to attract customers through social media and other online channels	Worked to increase IT literacy in the company and improve operations in online channels such as social media	The employee autonomously designed posts and increased followers of each social media account
Until now, social media has been something abstract to us. We now have a more specific image of it in our minds, and we know what we want to do with it. We're happy about how actively this employee shares opinions during meetings.			

Inquiries: Okinawa Industry Promotion Public Corporation  
Okinawa Professional Workforce Strategy Center (098-859-6237)



# 4

## Detailed overview of available aid

### 4 - 1 Support Towards the Reduction of Initial Investments

#### Financing system of the Okinawa Development Finance Corporation

Financing is available if needed to conduct business in international logistics hubs/industrial clusters or industrial innovation promotion areas.



Okinawa Development Finance Corporation

Fund Name	Amount Limit	Repayment Period	Contact
Business Development Fund	70% of required capital	Within 25 years	Financing Department No. 1 Industrial Development Financing Group Phone: 098-941-1765
Fund for Small and Medium Businesses	¥720 million	Within 20 years	Financing Department No. 2 Small and Medium Enterprise Financing Group No. 1 Phone: 098-941-1785
Occupation Fund	¥72 million		Financing Department No. 2 Small and Medium Enterprise Financing Group No. 2 Phone: 098-941-1795

\*In addition to the above, a variety of other financing systems are available depending on type of business and objective in use of funds.  
\*For more information, please visit the website of Okinawa Development Finance Corporation or contact us by phone.

### 4 - 2 Support for transport

#### Project for Promotion of Aircraft Container Space Usage

(Contact: Okinawa Prefecture Department of Commerce and Labor, Section for Asian Business Strategy, Phone: 098-866-2340)

Producers and similar businesses in Okinawa Prefecture can receive financial support for a portion of the air freight charges for cargo they export (in 2023). (Various export duties such as fuel surcharges, customs clearance expenditures, or freight receipt fees are the responsibility of the user.)

- Available for** : Producers, manufacturers, export trading companies, freight transportation companies, etc. with headquarters or branch offices in Okinawa Prefecture
- Applicable cargoes** : Agricultural products, livestock products, marine products, processed foods, precision machinery, etc. that are suitable for air freight
- Applicable Areas for Export** : Hong Kong/Shanghai/Bangkok/Singapore/Kuala Lumpur/Taipei/Seoul
- Implementation Period** : With in the 2023 Fiscal Year (Acceptance of applications may be closed upon exhaustion of budget during this period.)
- Assistance Details/Conditions** :
  - Over 50% (by weight) of the cumulative cargo quantity must be exportable products from the prefecture.
  - Those planning to use air transportation on an ongoing basis.
  - Those who report to Okinawa Prefecture on the contents, quantity, monetary value, etc. of exported items
  - Those who disclose distribution costs to Okinawa Prefecture and producers

\* The above terms and conditions are subject to change.

#### Conceptual diagram of the Project for Promotion of Container Space Usage



### 4 - 3 Okinawa Industry Promotion Corporation Support Services



Okinawa Industry Promotion Public Corporation

For medium and small entrepreneurs aiming to develop new businesses and products and for those seeking to found companies

We provide advice to medium and small business owners who are not sure where to turn for help, such as with issues related to physical distribution, benefits under the tax system, and new client acquisition, through phone, email, or in-person visits as needed. We encourage everybody to please feel free to reach out.

Support category	Content of support
1. Consultation on management overall	① Consultation desk for anything management-related ② Consultation on troubles in subcontracting transactions ③ Receiving advice from experts (dispatch-based)
2. Financing (utilization of prefectural financing programs)	① Raising funds for company establishment ② Raising funds to undertake new business
3. Development of new business	① Improving management through new business initiatives
4. Sales channel expansion/logistics	① Developing new markets and expanding sales ② Consulting on various logistical matters
5. Capital investment	① Operators want to adopt or renew machinery and equipment necessary for their business
6. R&D, new business creation, industry-academia-government collaboration	① Development of new products through industry-academia-government collaboration ② Research and development to create new business
7. Overseas expansion	① Utilization of the prefecture's overseas offices ② Opening up sales channels overseas
8. Human resource development and matching	① Participating in seminars organized by public corporations ② Developing human resources with earning power ③ Employing people who are ready to work immediately
9. Information and guidance from the Corporation	① Corporation Network membership ② "Okinawa Venture Studio" information paper ③ Corporation Email Newsletter, full of useful information! ④ Support for small- and medium-sized enterprises 100



Okinawa Industry Promotion Corporation  
1831-1 Oroku, Naha City, Okinawa 901-0152, Japan  
(Okinawa Industry Support Center 4F) TEL: 098-859-6255





## 4 - 4 Support in Securing and Training Personnel

### (1) Local Employment Development Subsidy (Local Employment Development Course)

(Inquiries: Okinawa Subsidy Center, TEL. 098-868-1606)

Businesses with offices established and maintained (applicable expenses of ¥200,000 or more per office, total of ¥3 million or more) in regions agreeing to promote employment development or depopulated regions requiring employment recovery. Such businesses which hire 3 or more applicants (2 in the case of founding a company) residing in the applicable region will be provided this subsidy according to the number of eligible workers hired and the expenses of the offices established and maintained (other conditions apply).



Local Hiring and Employment Development Subsidy

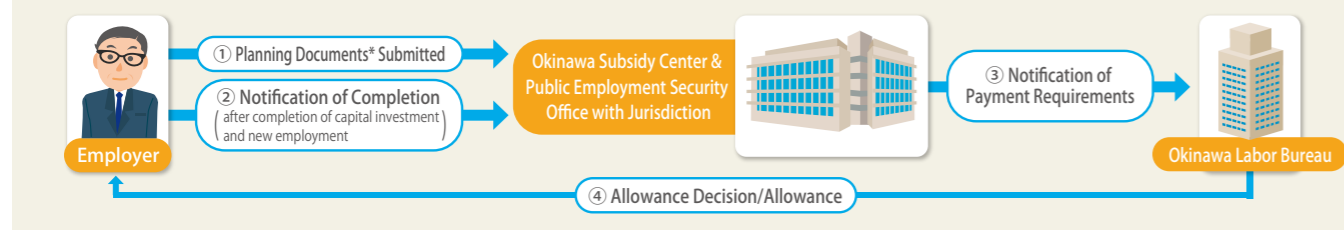
**Allowance** : Regulated amount (¥480,000–¥9.6 million)/year  
**Subsidy Period** : Once per year for up to three years

Establishment and maintenance costs	Increase in the number of applicable employees Numbers in parentheses ( ) are only applicable upon the founding							
	3 (2)-4 people		5-9 people		10-19 people		More than 20 people	
	Basic	Incentivized	Basic	Incentivized	Basic	Incentivized	Basic	Incentivized
¥3-10 million	48万円	60万円	76万円	96万円	143万円	180万円	285万円	360万円
	(50万円)		(80万円)		(150万円)		(300万円)	
¥10-30 million	57万円	72万円	95万円	120万円	190万円	240万円	380万円	480万円
	(60万円)		(100万円)		(200万円)		(400万円)	
¥30-50 million	86万円	108万円	143万円	180万円	285万円	360万円	570万円	720万円
	(90万円)		(150万円)		(300万円)		(600万円)	
¥50 million or more	114万円	144万円	190万円	240万円	380万円	480万円	760万円	960万円
	(120万円)		(200万円)		(400万円)		(800万円)	

\*\*1 If the production requirement is not met, the Basic amount will be paid. If it is met, the Incentivized amount will be paid.

\*\*2 For small business owners, an extra 1/2 of these amounts will be added to the first amount paid. However, regardless of this, in the case of a founded business, to increase the number of employees from 2, the amount in parentheses ( ) will be doubled when the first payment is made \*

#### Flowchart (shared by 1 & 2 above)



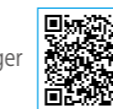
\*Planning documents relating to establishment and maintenance of business site (facilities and equipment) as well as hiring.

### (2) Local Employment Development Subsidy (Okinawa Youth Employment Development Course)

(Inquiries: Okinawa Subsidy Center, TEL. 098-868-1606)

Businesses with offices established and maintained (applicable expenses of ¥200,000 or more per contract, total of ¥3 million or more) in Okinawa Prefecture, and which hire with the intention of long-term employment 3 or more applicants of age 35 or younger residing in the prefecture, will be provided a subsidy for part of the wages paid to said employees.

If, in addition to the 3 or more eligible young employees hired, a company also hires a new post-secondary graduate residing in Okinawa Prefecture, that new graduate may be eligible for a subsidy (other conditions apply).



Regional Employment Development Subsidy (Okinawa Youth Employment Promotion Course)

**Allowance** : Subsidizes 1/4 of the amount in wages paid by the employer to the subsidy recipient (per person) during the calculation period (1/3 for SMEs)

**Subsidy Period** : Twice annually for one year (two years for companies with good employee retention)

**Allowance Limit** : 1.2 million yen per person per year (600,000 yen per person per calculation period)

\*Note: Goods dispatched, delivered, and fully paid and workers hired between submission of planning documents and completion thereof are eligible.

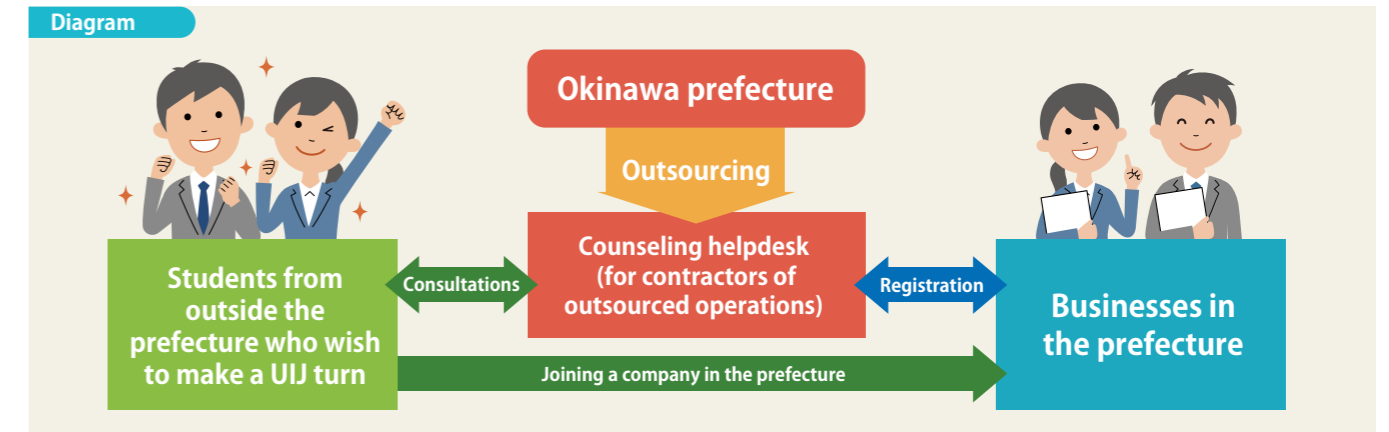
### (3) Okinawa U/I-turn Employment Support Center

The Okinawa U/I-turn Employment Support Center has opened offices in Okinawa (Naha), Tokyo, and Osaka to act as a consultation point for people wishing to find employment in Okinawa Prefecture, offering support for employment/re-employing in the prefecture. The centers provide employment consultation services, information on companies in Okinawa Prefecture, information on relocating, information on employment events scheduled to take place in each area, and the like. Specialized consultants support you with your employment needs in Okinawa Prefecture.

Inquiries



Rikka Okinawa U-I turn business navigation site



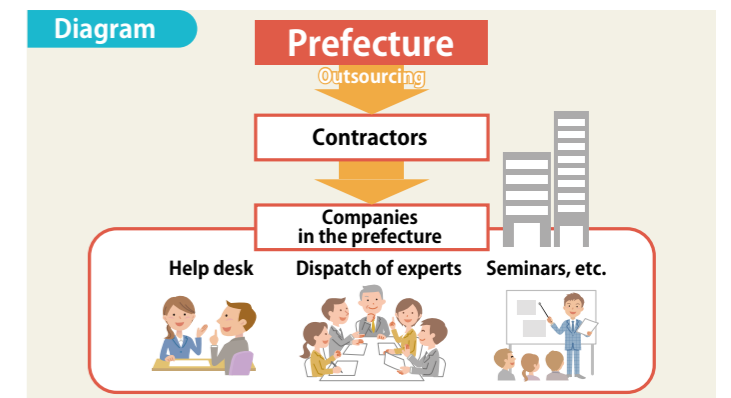
### (4) Project to Provide Comprehensive Support for Securing and Retaining Young Employees

A consultation service is available to help companies in Okinawa Prefecture solve issues they face in securing and retaining young employees.

The service holds a consultation to identify the company's challenges and then dispatches experts who are well versed in those issues. It also holds seminars on topics such as improving recruiting power and the workplace environment.



Project to Provide Comprehensive Support for Securing and Retaining Young Employees



### (5) International Logistics Hub Industry Development Zones in the Uruma Location Support Project

(Inquiries: Business Location Promotion Division, Commerce, Industry and Labor Department, Okinawa Prefecture TEL: 098-866-2770)

Companies located in the former Special Free Trade Zone, one of the industrial clusters in Okinawa's international logistics hub, face challenges such as reducing transportation costs and securing partnering companies. This project will provide comprehensive hands-on support to companies in this area from the initial establishment of their site in Okinawa until their operations stabilize.

Project targets: Companies and other organizations in the Uruma-Okinawa area (former Special Free Trade Zone), an industrial cluster in the international logistics hub

Support details:

(1) Strategic proposals and other advice from experts  
 Management support experts will provide consistent support through visits in person and online. The support will include needs analysis, strategic proposals, implementation, verification, and improvement, using a PDCA cycle.

(2) Matching by the experts

The management support experts will act as coordinators to promote business-to-business or industry-academia collaboration by matching companies with companies, educational institutions or other organizations in Okinawa.





# 4 - 5 Okinawa Prefectural Industrial Technology Center Support Services

~Okinawa is here to help solve your technical problems~

The Okinawa Prefectural Industrial Technology Center accepts technical consultations from companies, and provides support to solve their technical problems through joint research with the Center, the provision of technical information, and technical guidance. If you have technical problems, please contact us.

## (1) Support for joint research and development in collaboration with the company (Inquiries: Okinawa Industrial Technology Center TEL.098-929-0111)

Okinawa Prefectural Industrial Technology Center provides joint research opportunities to help solve technical problems faced by companies.

Targeted business: Small and medium enterprises, etc. in the prefecture

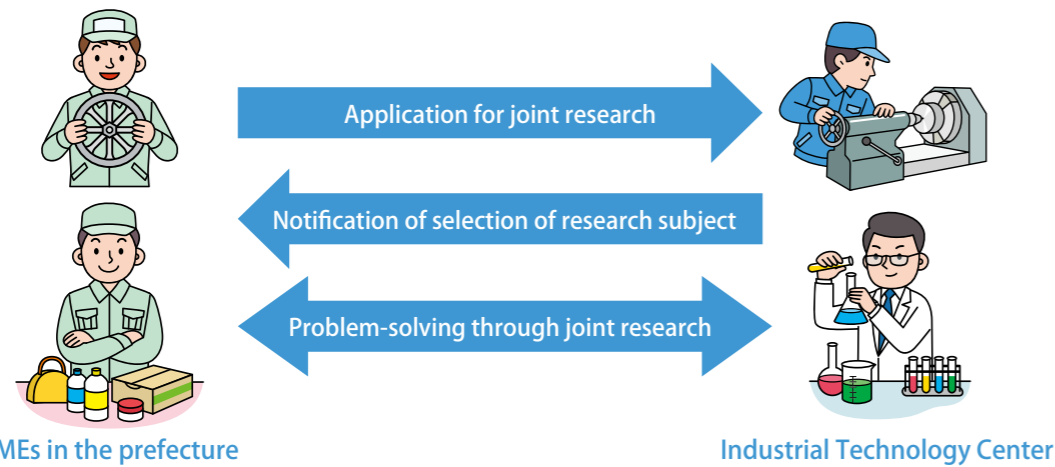
What is supported: Developing new products and technologies that would be difficult for a single company, improving manufacturing processes, establishing improved technologies, resolving technical issues, etc.

- Companies must bear at least half of the expenses necessary for the research (consumables, travel expenses, etc.).
- Ballpark figure: 300,000 to 2,000,000 JPY/theme (Burden borne by the company; 150,000 to 1,000,000 JPY).



Joint Corporate Research and Development Support Project

Note: Please visit the Industrial Technology Center's home page or inquire by phone for details.



## (2) Business to Support Industrial Technology (Inquiries: Okinawa Industrial Technology Center TEL.098-929-0111)

In order to improve the productivity and quality of regional industries, such as in manufacturing, and support product development, we identify technological issues that companies face and aim to resolve these issues using the technologies, research results, and information of the Industrial Technology Center.

Targets: Medium and small companies and would-be entrepreneurs in the prefecture

Support content : 1) Technological advice (free)

Specialized consultants provide advice in response to requests through phone, email, or in-person visits regarding technological issues, such as with product development and quality improvement.

2) Acceptance of trainees

We accept trainees who seek to learn analytical technologies or create prototypes for product development.

3) Requested testing (paid)

We fulfill requests for tests related to analysis required for product quality management and product development.

4) Usage of equipment (paid)

The processors and analytical equipment of the Industrial Technology Center can be used for processing tests of materials or analysis for quality management.

5) Hosting technological courses

We host technological courses in specialized fields, such as testing, analytical technologies, welding, food processing, and hygiene management technologies.



Division of Commerce, Industry and Labor Industrial Technology Center



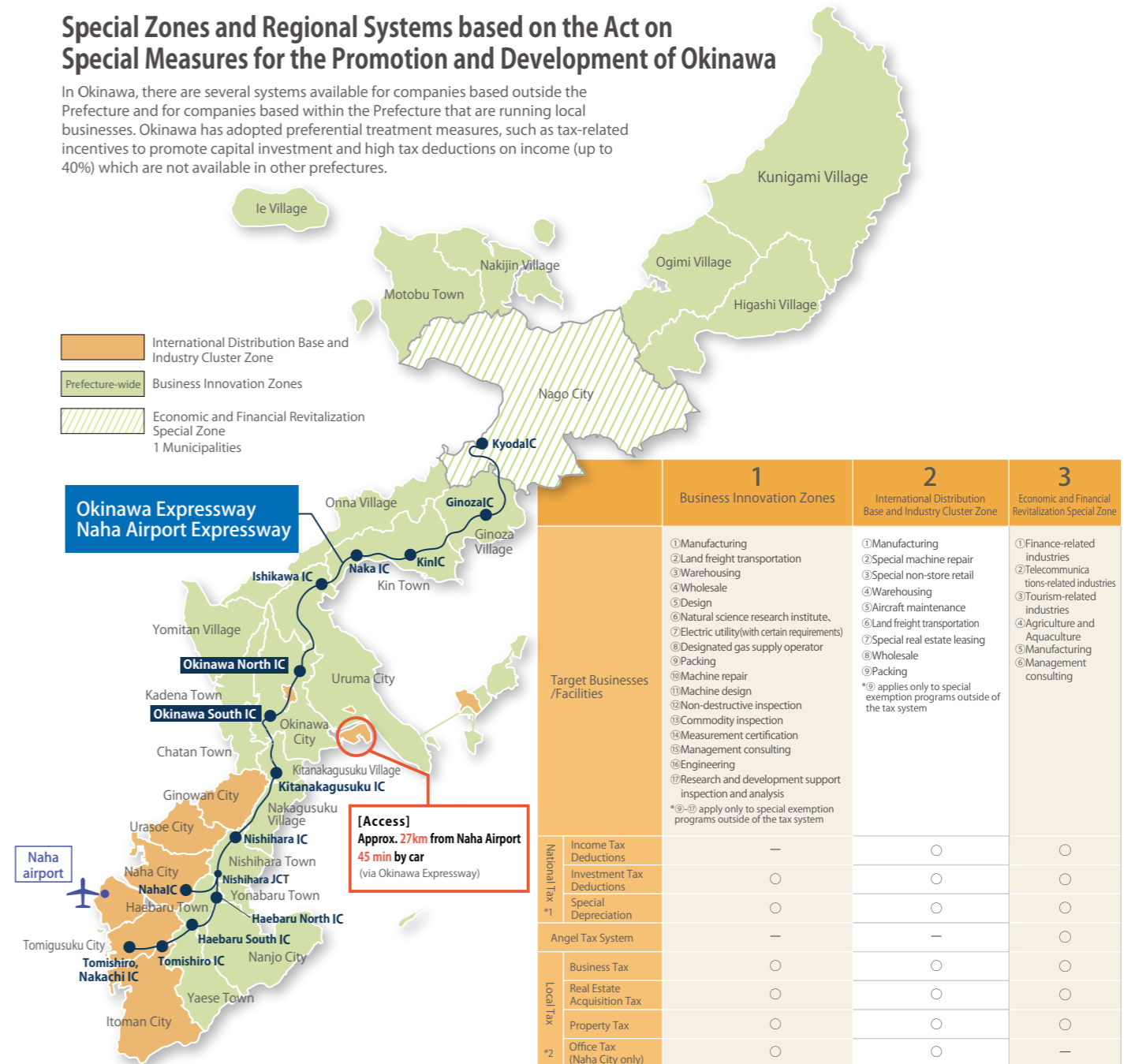
Okinawa Industrial Technology Center

# 5

## Special Taxation in a Special Economic Zone

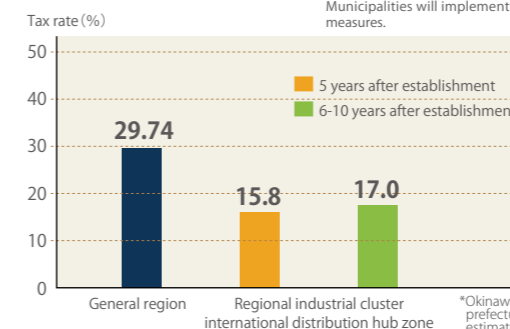
### Special Zones and Regional Systems based on the Act on Special Measures for the Promotion and Development of Okinawa

In Okinawa, there are several systems available for companies based outside the Prefecture and for companies based within the Prefecture that are running local businesses. Okinawa has adopted preferential treatment measures, such as tax-related incentives to promote capital investment and high tax deductions on income (up to 40%) which are not available in other prefectures.



### Comparison of effective tax rates for corporate taxes in the international distribution base and industry cluster zone versus general regions

\*Corporate tax rate for general regions quoted from public reference material on the Ministry of Finance website (federal tax + local tax)  
 \*The corporate tax rate for the international distribution hub zone was estimated assuming selection of the "income deduction scheme" (federal tax + local tax).



\*1. For national tax, only one special measure can be selected for each fiscal year.  
 \*2. Office tax is based on Article 33 of the Local Tax Law Supplementary Provisions. In all other cases, Prefectures and Municipalities will implement measures according to laws and regulations, following the national deficit compensation measures.

**For more information about the application of the tax system, please consult the Okinawa Special Zone/Regional Tax System One-Stop Assistance Services.**

Okinawa Special Zone/  
Regional Tax System  
One-Stop Assistance Services :  
TEL.098-894-6377  
E-mail:okitoku@okinawa-ric.or.jp



# 5-1 Business Innovation Zones

## All over the prefecture (41 municipalities)

Businesses within the limits of the area designated in the Industrial Innovation Promotion Plan established by the Okinawa prefectural governor (throughout the prefecture) may take advantage of tax incentives with regard to the following national and local taxes for plans to implement industrial advancement and business innovation measures, provided that they have first received approval regarding the eligibility of said plans from the prefectural governor and confirmation by the responsible cabinet minister.



	Incentives	Outline of tax incentives	Applicable industries
National tax	① Investment tax credit	If new or additional facilities that exceed a certain value (machinery and equipment, furniture and fixtures 1 million yen <sup>Note 2</sup> , buildings and their attached facilities 10 million yen <sup>Note 3</sup> ) and are in accordance with the approved implementation plan for industrial upgrading and business innovation measures are increased within Okinawa, a set percentage of the acquisition value of said facilities will be deducted from the corporate income tax. <b>Deduction rate:</b> Machinery, installations, appliances, fixtures 15% Buildings and their auxiliary facilities, structure <sup>4</sup> 8% (Limited to 20% of the corporate tax amount, can be carried forward for 4 years, maximum acquisition price of 2 billion yen) * Approval by the Governor of Okinawa and confirmation by a competent minister are required	① Manufacturing ② Road freight forwarding ③ Warehousing ④ Wholesale ⑤ Design ⑥ Natural science laboratories ⑦ Electrical (with certain requirements) ⑧ Designated gas supply operator ⑨ Packing ⑩ Machine repair ⑪ Machine design ⑫ Non-destructive inspection ⑬ Commodity inspection ⑭ Measurement certification ⑮ Management consulting ⑯ Engineering ⑰ Research and development support inspection and analysis
	② Special depreciation	If new or additional facilities that exceed a certain value (machinery and equipment, furniture and fixtures 1 million yen <sup>Note 2</sup> , buildings and their attached facilities 10 million yen <sup>Note 3</sup> ) and are in accordance with the approved implementation plan for industrial upgrading and business innovation measures are increased within Okinawa, special depreciation is granted. <b>Deduction rate:</b> Machinery, installations, appliances, fixtures 34% Buildings and their auxiliary facilities, structure <sup>4</sup> 20% (Upper limit of acquisition price of ¥2 billion) * Approval by the Governor of Okinawa and confirmation by a competent minister are required	
Local tax	Tax exemption from corporate enterprise tax	Within the designated zones, if the cost of installing new equipment (5 million yen for machinery, installations, appliances, fixtures, 10 million yen for buildings and their auxiliary facilities) for the implementation of activities certified as promoting industry development / business innovation exceeds a certain price, there is partial tax exemption from corporate enterprise tax (5 years) * Approval by the Governor of Okinawa and confirmation by a competent minister are required	
	Tax exemption from real estate acquisition tax	Within the designated zones, if the purchase of buildings or land for the implementation of activities certified as promoting industry development / business innovation exceeds a certain price (10 million yen), there is partial tax exemption for real estate acquisition tax <sup>5</sup> * Approval by the Governor of Okinawa and confirmation by a competent minister are required	
	Tax exemption from property tax <sup>*Except warehousing businesses</sup>	Within the designated zones, if the cost of installing new equipment (5 million yen for machinery, installations, appliances, fixtures, 10 million yen for buildings and their auxiliary facilities) for the implementation of activities certified as promoting industry development / business innovation exceeds a certain price, depending on the ordinances of each municipality, there is partial tax exemption from property tax (5 years) <sup>5</sup> * Approval by the Governor of Okinawa and confirmation by a competent minister are required	
	Tax reduction of business tax <sup>*Only in Naha City</sup>	Within Naha City, if the cost of acquiring new equipment is 10 million yen or more, and the cost for acquiring buildings, etc. is 100 million yen or more for the implementation of activities certified as promoting industry development / business innovation, out of the the payable office tax, the taxable office floor surface area can be calculated as half the actual surface area (5 years)	<sup>*⑨-⑰ are not eligible for special exemptions from national tax or from regional tax (except business tax)</sup>

<sup>1</sup> To utilize the tax incentives, please consult the Okinawa Regional Taxation Office (national tax), the prefectural tax office (prefectural tax), and your municipal tax division (municipal tax).  
<sup>2</sup> For national tax incentives, choose between ① or ② (individuals can only choose ②).  
<sup>3</sup> Only auxiliary facilities installed at the same time as the building can be subject to tax incentives.  
<sup>4</sup> Only limited to appliances and fixtures exclusively for research and development or other appliances and fixtures specified by government ordinances.  
<sup>5</sup> Structures are limited to gas storage tanks for storing liquefied natural gas supplied to the gas supply industry or manufacturing industry, and pipelines for the use of said gas.  
<sup>6</sup> Only limited to land acquired where construction is started within one year after its acquisition (purchase)

# 5-2 International Distribution Base and Industry Cluster Zone

## Naha, Urasoe, Tomishiro, Ginowan, Itoman district, Uruma, Okinawa district (Nakagusuku Port Shinko Zone, Nakamine/Kamiesu Zone, Henza Zone, Ikento Zone)

Companies in zones designated under the International Logistics Hub Industry Concentration Plan formulated by the Governor of Okinawa are eligible for the following tax structure incentives after passing a screening process including approval from the Governor and verifications by the relevant Minister regarding points such as their business plan.



\* Certification requirements differ depending on the type of incentive.

	Incentives	Outline of tax incentives	Applicable industries
National (Japan) tax	① Income Deduction	Corporations that have been newly established in an international logistics hub/industrial cluster, operate exclusively in any of the targeted industries, and have 15 or more permanent employees, will receive a 40% deduction on corporate taxes for 10 years after being established. (The same also applies to corporate business tax and corporate inhabitant tax.) *For specific international logistics hub businesses, certification by the Governor of Okinawa Prefecture and confirmation by a Cabinet Minister are required.	Manufacturing businesses, warehousing businesses, specified equipment maintenance businesses, specified nonstore retailing, and aircraft maintenance businesses)
	② Investment tax credit (ITC)	If new facilities are built or expanded exceeding a specified amount (1 million yen for machinery and equipment; 10 million yen for buildings and their related equipment; see note 2) for supplying target industries in the target region, a fixed proportion of the acquisition cost will be deducted from corporate taxes. <b>Tax credit rate:</b> 15% of machinery and equipment; 8% of buildings and their related equipment (up to 20% of the amount of corporate tax; carry-forward: 4 years; upper limit of 20 million yen for acquisition costs) * Approval by the Governor of Okinawa and confirmation by a competent minister are required	
	③ Special depreciation system	If new facilities are built or expanded exceeding a specified amount (1 million yen for machinery and equipment; 10 million yen for buildings and their related equipment; see note 2) for supplying target industries in the target region, special depreciation will be recognized. <b>Special depreciation rate:</b> 50% for machinery and equipment; 25% for buildings and their related equipment (upper limit of Acquisition price of ¥2 billion) * Approval by the Governor of Okinawa and confirmation by a competent minister are required	
Customs duties	Application of selective system for customs duties	If you accept products in Japan processed or manufactured in a bonded factory, or similar, from raw materials that were foreign cargo and you are charged customs duties on those products, you are allowed to choose either a taxation scheme applying to the materials (excluding special items) or a scheme applying to the products. * Business authorization required from the relevant Minister.	Manufacturing businesses, warehousing businesses, road cargo transportation businesses, wholesaling businesses, specified equipment repair businesses, specified nonstore retailing, specified real estate leasing, and aircraft maintenance businesses, packing businesses*
	Reduced customs bond permission fee	The customs bond permission fee will be halved for bonded warehouses, bonded factories, bonded show rooms, and general bonded areas. * Business authorization required from the relevant Minister.	*Packing businesses are not eligible for special exemptions from national tax or from regional tax (except business tax)
Local taxes	Corporate enterprise tax exemption	If facilities are built out or expanded exceeding a specified amount (10 million yen for machinery and equipment; 10 million yen for buildings and their related equipment) for supplying target industries in the target region, a portion of corporate enterprise taxes will be waived (for 5 years) (see note 2). * Approval by the Governor of Okinawa and confirmation by a competent minister are required	
	Real estate acquisition tax exemption	If facilities are built or expanded exceeding a specified amount (10 million yen for machinery and equipment; 10 million yen for buildings and their related equipment) for supplying target industries in the target region, a portion of real estate acquisition taxes will be waived (see note 2, see note 3). * Approval by the Governor of Okinawa and confirmation by a competent minister are required	
	Fixed asset tax exemption <sup>*Except warehousing businesses</sup>	If facilities are built or expanded exceeding a specified amount (1 million yen for machinery and equipment; 10 million yen for buildings and their related equipment) for supplying target industries in the target region, a portion of fixed asset taxes levied according to each municipality's regulations will be waived (for 5 years) (see note 2, see note 3). * Approval by the Governor of Okinawa and confirmation by a competent minister are required	
	Business office tax exemption <sup>*Naha city only</sup>	In Naha city, if the total cost for acquiring machinery, equipment, etc. to supply target industries equals or exceeds 10 million yen, or if the total acquisition cost of constructing new buildings, etc. equals or exceeds 100 million yen, calculations will be halved for commercial floor space subject to asset taxation as part of the business facility tax. (for 5 years)	

\*To utilize the tax incentives, please consult the Okinawa Regional Taxation Office (national tax), the Office of the Counselor at Okinawa Regional Customs (customs tax), the prefectural tax office (prefectural tax), and your municipal tax division (municipal tax).  
Note 1: For national tax incentives, choose ①, ② or ③  
Note 2: This system applies only in cases where building-related equipment is acquired together with actual buildings.  
Note 3: With regard to land, this is limited to building construction commenced within one year of acquiring (purchasing) the land.

### Advantages of utilizing special zones / local systems

#### 1 Income deduction

A maximum of 40% of taxable income of corporate income tax can be deducted (only applicable to industrial clusters of international logistics bases).

**Before using the system:** Income 10 million yen, Amount of corporate tax 3 million yen

**After using the system:** Income deduction 4 million yen, Income 6 million yen, Amount of tax reduction 1.2 million yen, Amount of corporate tax 1.8 million yen

\* Corporate tax (national tax + local tax) is calculated as 30%  
\* When using income deduction, the effective corporate tax About 30%⇒20%

#### 2 Investment tax credit

When machinery and equipment, etc. are newly installed or expanded, a certain amount of their acquisition price can be deducted from the corporate tax.

**Before using the system:** Income 10 million yen, Amount of corporate tax 2.3 million yen

**After using the system:** Acquisition of machinery, etc. (Example: 6 million yen), 6 million yen × 15% = 900,000 yen, 2.3 million yen × 20% = 460,000 yen, Amount of tax reduction 1,360,000 yen, Amount of corporate tax 1,840,000 yen

\* Income refers to the amount when deducting only ordinary depreciation  
\* Income tax (national tax) is calculated as 23%  
\* Amounts exceeding the maximum deductible limit (20% of corporate tax) can be deducted from the following fiscal year (can be carried forward for 4 years)

#### 3 Special depreciation

When machinery and equipment, etc. are newly installed or expanded, a certain amount of the acquired value can be included in expenses as special depreciation expenses.

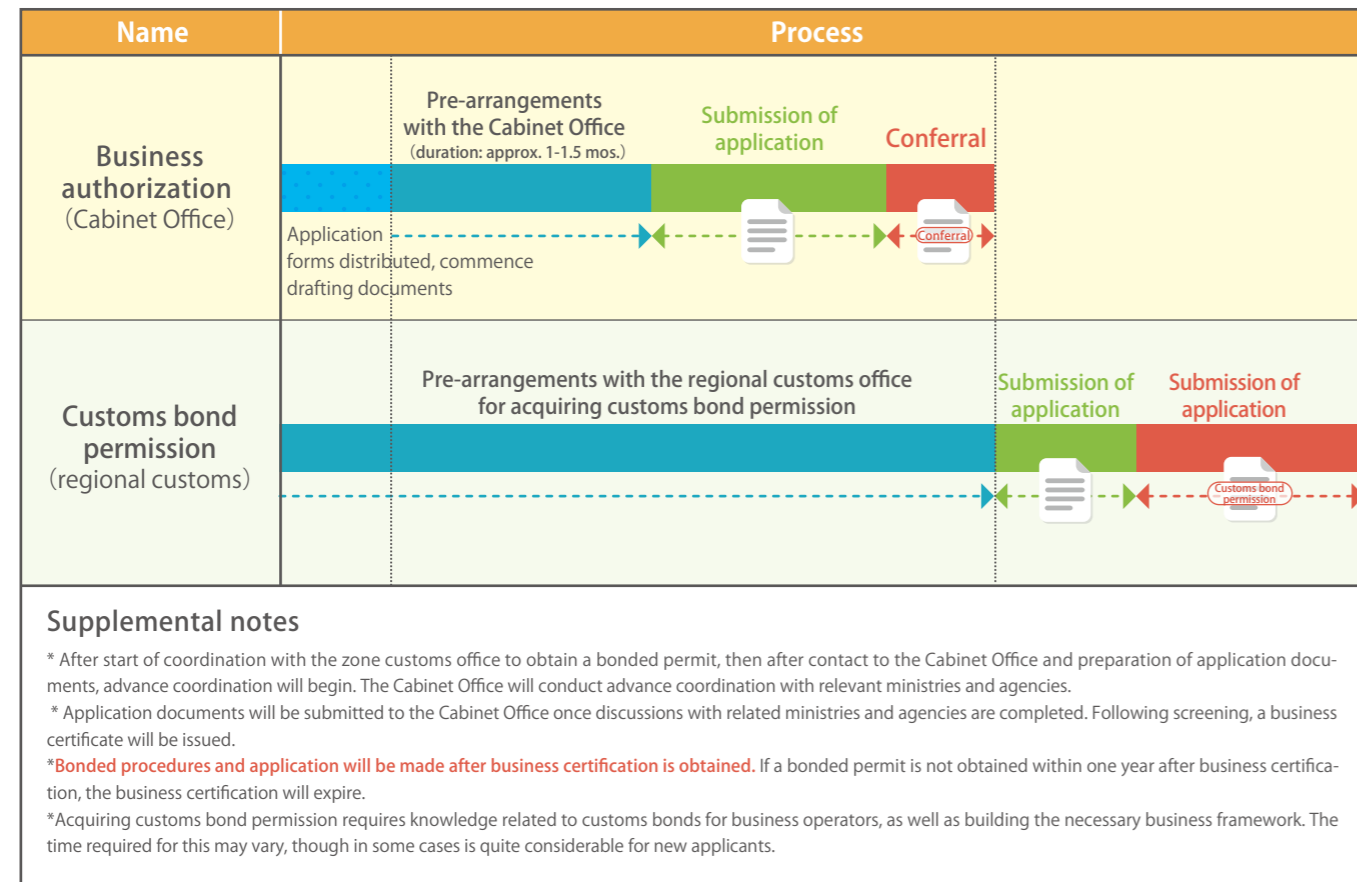
**Before using the system:** Income 10 million yen, Amount of corporate tax 2.3 million yen

**After using the system:** Acquisition of machinery, etc. (Example: 6 million yen), 6 million yen × 50% = 3 million yen, Special depreciation Deduction limit 3 million yen, Tax reduction during the year the incentive is used 690,000 yen, Income 7 million yen, Amount of corporate tax 1,610,000 yen

\* Income refers to the amount when deducting only ordinary depreciation  
\* Income tax (national tax) is calculated as 23%  
\* The special depreciation rate of 50% can only be used when utilizing the International Distribution Base Industrial Cluster Region System



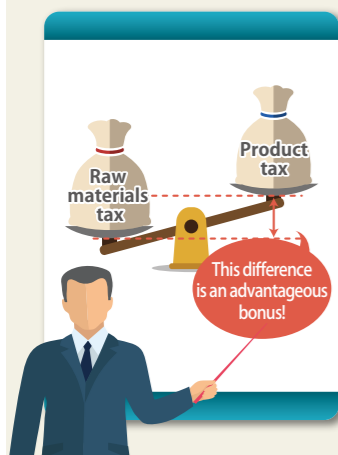
### How to obtain business certification for special customs taxation



### Selective system for customs duty

Companies can select either "materials customs" or "product customs" in the international distribution hub zone. If you take raw material that is foreign cargo secured with a customs bond and you process or manufacture it and ship (import) it into Japan as a product, you are allowed to choose the cheaper of two taxation schemes ("materials customs" or "product customs") for the customs duty.

\*Exclusions apply to some products.

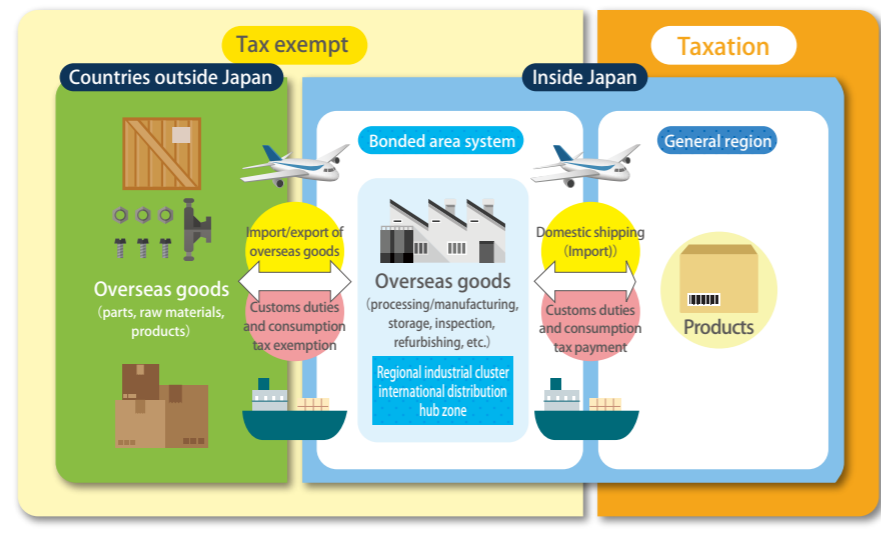


### What is the bonded area system?

The bonded area system is a system that allows a business to receive permission for a customs bonded zone from the Chief Customs Inspector and to store, process, manufacture, display, etc. foreign cargo in specified locations and facilities without having paid custom duties and consumption taxes.

#### Companies that have received bonded area permission

- If you process or manufacture components and/or raw materials that were foreign cargo and export them as products outside Japan, you do not need to pay customs duties or consumption taxes.
- You can store, inspect, refurbish, finish, etc. foreign cargo for which customs duties and consumption taxes have not been paid and export or ship them domestically in response to market demand. If they are shipped domestically, customs duties and consumption taxes must be paid.
- If stored foreign cargo is shipped abroad as returned goods or is destroyed as defective goods, there is no need to pay customs duties or consumption taxes.



# 5-3 Regional Basis Strengthening Tax (Tax incentives for the relocation and head office function expansion)

Businesses that relocate or expand their head office functions in areas designated in the "Regional Revitalization Plan" formulated by the Governor of Okinawa can take advantage of special taxation and other incentives by obtaining prior approval for the development plan and the implementation thereof from the Governor.

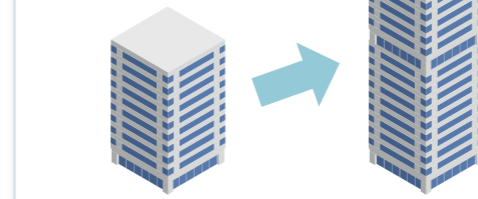
### Guide for Relocation/Expansion of Corporate Headquarters Functions

■ You can receive several preferential treatments by relocating or expanding your headquarters functions.

- ※ 1 Headquarters functions (designated business establishment) are assigned to a place of business performing essential duties and may correspond to 1) an office, 2) a research establishment, 3) a research and development department in a factory or 4) a training center.
- ※ 2 In order to receive preferential treatment, it is necessary to apply to the Program for the Regional Establishment and Development of Designated Businesses to Promote Local Revitalization and receive the authorization of the Prefectural Governor. (Certification must be received by March 31, 2024.)
- ※ 3 We have made an outline of the preferential treatment system. To receive more details about the system and its application, please make an inquiry using the contact information below.

#### Expansion Model

Strengthening of headquarters functions for companies in rural areas



#### Relocation Model

Relocation from Tokyo's 23 wards



### ■ National Preferential Treatment System Tax System Special Measures (Locally Reinforced Tax System)

	Expansion Model	Relocation Model
Target Areas (Municipalities)	Uruma City, Okinawa City, Urasoe City and Itoman City An area of Haebaru Town	Nago City + Municipalities listed below Onna Village and an area of Yaese Town
Office Tax Reduction	Special depreciation (15%) or tax deduction (4%)	Special depreciation (25%) or tax deduction (7%)
Employment Promotion Tax System	Up to 600,000 yen per additional employee	Up to 1,500,000 yen per additional employee

### ■ Prefectural Preferential Treatment System Tax Special Measures (reduction of local taxes)

\*Certain requirements, such as specific equipment and a certain investment amount, must be met.

	Expansion Model	Relocation Model
Business Tax	Not applicable	Reduction for 3 years
Real Estate Acquisition Tax	1/10 th of current tax rate	Tax Exemption
Property Tax*	Reduction for 3 years	Tax exemption for 3 years

\*For property tax, what is displayed corresponds to the prefectural tax. Please contact your municipality for inquiries related to the municipal tax.

For more information, please contact the Industrial Location Division of Okinawa Prefecture's Department of Labor, Industry and Commerce.

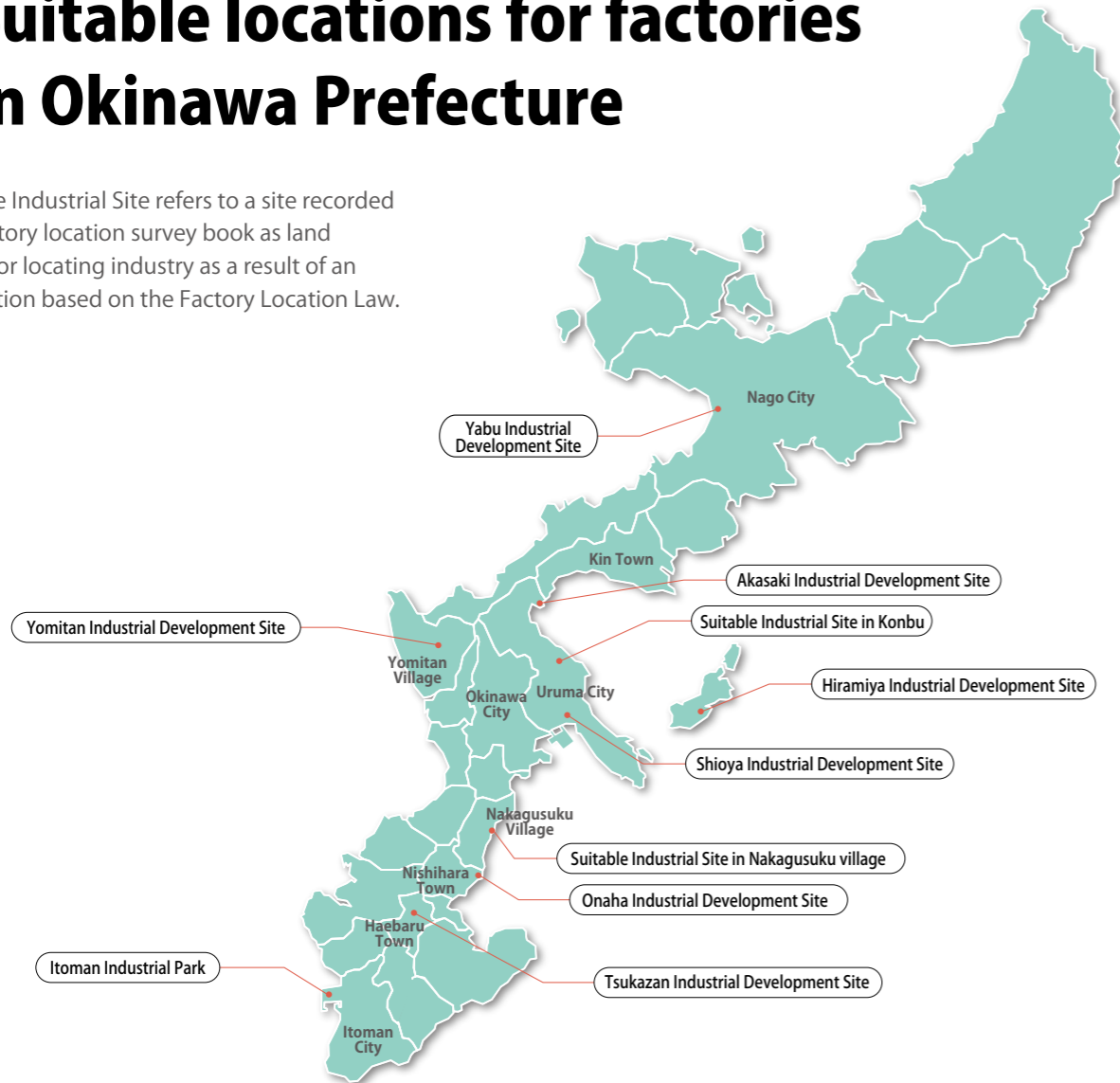
TEL:098-866-2770 FAX:098-866-2846 E-mail:indus-pr@pref.okinawa.lg.jp  
<http://www.pref.okinawa.jp/site/shoko/kigyoritchi/index.html>





# 6 Suitable locations for factories in Okinawa Prefecture

A Suitable Industrial Site refers to a site recorded in the factory location survey book as land suitable for locating industry as a result of an investigation based on the Factory Location Law.



Name of location suitable for industry	city/town name	Total area (Ha) (No geographical location)	Main land classification	Transportation			Aqueduct	Estimated price (yen/ m <sup>2</sup> )	Principal landowner	Section in charge (phone number)
				Road	Port	Naha Airport				
Yabu suitable location for industry	Nago	13.0 (10.4)	Plain	National highway No. 58 Kyoda IC 800m	Unten Port 18km	75km	Industrial water supply	15,100	Private (agriculture)	Division of Commerce, Industry and Enterprise Promotion (0980-53-7530)
Yomitan location suitable for industry	Yomitan	19.2 (1.6)	Miscellaneous site	National highway No. 58 Ishikawa IC 8km	Naha Port 28km	30km	water supply system	115,000	Private (non-agriculture)	Commerce and Tourism Section (098-968-3236)
Akasaki location suitable for industry	Uruma	17.1 (0.4)	Reclaimed land	National highway No. 329 Ishikawa IC 500m	Nakagusuku Port 10km	39km	Industrial water supply	75,000	Company	Industrial Policy Section (098-923-7611)
Konbu location suitable for industry	Uruma	35.2 (2.5)	Plain	National highway No. 329 Okinawa-kita IC 500m	Nakagusuku Port 12km	33km	Industrial water supply	12,600	Local public organization	
Shioya location suitable for industry	Uruma	6.0 (0.6)	Plain	National highway No. 329 Okinawa-minami IC 3.5km	Nakagusuku Port 1km	30km	Industrial water supply	44,300	Private (non-agriculture)	
Hiramiya district location suitable for industry	Uruma	39.6 (23.6)	Non-residential land	National highway No. 329 Okinawa-kita IC 15km	Nakagusuku Port 10km	43km	Industrial water supply	50,000	Company	
Nakagusuku location suitable for industry	Nakagusuku	33.8 (1.6)	Residential land	National highway No. 329 Kitanaka Gusuku IC 100m	Nakagusuku Port 9km	23km	Industrial water supply	35,500	Private (non-agriculture)	Commerce and Tourism Section (098-895-2163)
Onaha location suitable for industry	Nishihara	78.6 (2.3)	Field	National highway No. 329 Nishihara IC 120m	Nakagusuku Port 13km	16km	Industrial water supply	65,600	Private (non-agriculture)	Industry and Tourism Section (098-945-4540)
Tsukazan location suitable for industry	Haebaru	8.7 (0.6)	Residential land	National highway No. 507 Haebaru-minami IC 100m	Naha Port 6km	7km	Industrial water supply	73,400	Private (non-agriculture)	Commerce and Tourism Section (098-889-4430)
Itoman Industrial Park	Itoman	139.5 (0.0)	Reclaimed land	National highway No. 331 Tomigusuku-Nakachi IC 6km	Naha Port 10km	8km	Industrial water supply	31,900	Development Authority	Urban Planning Division (098-840-8141)
		<b>Grand total</b>								
		251.2 (43.6)								

\*The area for the still-to-be-located portion is the sum of distributed areas of land rather than the area of a single piece of land.

# 7 Overview of International Distribution Base and Industry Cluster Zone Uruma/Okinawa District (Nakagusuku Bay Port Shinko District Industrial Park)



- 1 Katsuren Castle (World Heritage Site)
- 2 Okinawa IT Shinryo Park
- 3 Okinawa Mold Technology Institute
- 4 Okinawa Health Biotechnology Research & Development Center
- 5 Okinawa Industrial Technology Center
- 6 Okinawa Biotechnology Business Support Center
- 7 Okinawa Life Science Research Center
- 8 Large shopping center (AEON)

## (1) Uruma/Okinawa District (Nakagusuku Bay Port Shinko District) — Overview

- Total area : 392.4ha
- Former General Industry Zone : 102.6ha
- International Logistics Hub (formerly Uruma District) : 122.4ha (Area for lease: 90.0ha)
- Wharf area : 24.4ha
- Harbor-related facilities area : 37.0ha
- Residential-use area : 37.1ha
- Other (green space, etc.) : 68.9ha



International Distribution Base and Industry Cluster Zone [ Uruma/Okinawa District ]

## (2) Regarding target industry sectors

In order to strategically promote the attracting of companies to the prefecture, we are doing more to attract — especially to the International Logistics Hub Industry Development Zone — industries that need to be near an airport or harbor, since companies in such industries can be expected to link up with other tenant companies and with companies elsewhere in the prefecture and can also be expected to generate outbound freight from Okinawa. We are working to bring together businesses of the types indicated below that are in industries that manufacture high-value-added products.

### ① Target Industry Sectors

Okinawa is looking for industry players to revitalize our Airport and port based industries. As a general rule, only companies which plan to ship and export 50% of their products or services outside Japan or Okinawa will be considered. For more information, please contact the person in charge.

### ② Industry Sectors Prioritized for Selection

- Okinawa is prioritizing the sectors which match the following criteria.
1. Companies which use Naha Airport as their international logistics hub and manufactures products with high profit margins such as semiconductor and electronic-related products as well as Factory Automation and robotics-related products.
  2. With the aim to develop an industry cluster in aviation, companies which manufacture or process parts and equipments for the aviation sector as well as suppliers of equipment and parts for avionics maintenance services.
  3. Medical equipment manufacturing industry, including high-tech medical and biotechnology companies.
- Note: Other than those stated above, the Okinawan government will continuously gauge socioeconomic changes and add other sectors which show a promising future in driving the prefecture's economy to the list after considering their synergy with other existing local companies
4. Companies actively introducing clean energy or DX
  5. Companies contributing to the earning power of Okinawan companies through new business, new technology, etc.
  6. Companies with potential to benefit Okinawa's economy through expansion of procurement in Okinawa (parts centers, Repair Center, Central Kitchen, etc.)

Applicable category	Type of Business
Land for sale	○Manufacturing, warehousing, road freight forwarding, wholesaling, designated machinery repair, designated non-store retailing, designated real estate leasing, and aircraft maintenance (industries subject to the international logistics hub industrial concentration zone)
Leased factories for general manufacturing	Manufacturing
Leased factories for high-tech manufacturing	Manufacturing
Support facilities for forges and foundries	Forging- and foundry-related industries (molds, etc.).

## (3) Former Special Free Trade Zone - Overview

### ① Land for sale (as of February 2023)

- Total area : approx.900,000m<sup>2</sup> (including land for leased factories)
- Area already in use : approx.831,000m<sup>2</sup> (92.3%)
- Area still available for use : approx.69,000m<sup>2</sup> (7.1%)
- Individual lot size : ≥3,000m<sup>2</sup> (In principle, we can accommodate requests for any lot size of 3,000m<sup>2</sup> or more.)
- Lot price : ¥26,700/m<sup>2</sup> (As of February 2023)

\*Land prices are subject to change. Please contact our New Business Facility Promotion Division at 098-866-2770 for more information.



② Rental space: 48 (General: 42, High-tech: 3, Processing: 3)

① Leased factories for general manufacturing (41)

We have established these factories to serve as receptacles to help the companies that locate here reduce their initial investment and start up earlier, and for the purpose of encouraging manufacturers to concentrate in the Zone.

**Construction/floors :** Steel-frame, single-story construction (Some have two stories)  
**Configuration :** Non-partitioned, free-standing building (one part of which is divided into sections)



Exterior of leased factory



Interior of leased factory

Factory type (Site area)	Factory Area	Office Area	Workshop ceiling height *From floor to main beam	Floor load	Other
1,000㎡	660~830㎡	170~340㎡	2.8~7.1m	1.5~2.0t/㎡	*Parking for 20-45 vehicles per building *Office, kitchenette, separate men's and women's restrooms
1,500㎡	1,073~1,312㎡	188~427㎡	4.5~9.0m		
1,500㎡ (divided into two lots)	Approx. 480㎡/lot	Approx. 270㎡/lot	3.0~5.6m		
2,000㎡	1,566~1,800㎡	200~434㎡	4.6~7.8m		

② Leased factories for high-tech manufacturing (3)

With the aim of creating a model area for advanced manufacturing, we have established these factories to encourage companies to locate here that manufacture high-value-added products using high technology, advanced technology, etc.

Factory type (Total floor area)	Workshop Area	Office and others Area	Workshop ceiling height *From floor to main beam	Floor load	Other
Building No. 1 Stand-alone type (4,636㎡)	Total Workshop Area 2,780㎡	1,856㎡	8.4~10.8m	2.0t/㎡	*Parking for 20-45 vehicles per building *Office, kitchenette, separate men's and women's restrooms
Building No. 2 Terraced-type 5 units (About 640㎡ per unit)	About 500㎡ per unit	About 140㎡/unit	6.5~8.0m	1.3t/㎡	
Building No. 3 Stand-alone type (4,770㎡)	3,231㎡	1,539㎡	*Raceway (Lighting fixtures) Mounting height: Around 4.30m	1.5t/㎡	

③ Support facilities for forges and foundries (three separate, row-house-style leased factories) Annexed facility: Mold Technology Institute

With the aim of stimulating the manufacturing base in Okinawa Prefecture, we have established these facilities to reduce initial investments for companies in forging- and foundry-related industries and to help them start up and begin operation.

Lease Factory Space (per room)

Building	Annual rent	Work area	Office area	Ceiling height below crossbeams	Floor load	Outdoor space
Bldg. 1	¥3,120,000	350㎡	50㎡	8.3~9.3m	1st floor: 1t/㎡ 2nd floor: 500kg/㎡	Parking for 10 vehicles
Bldg. 2	¥1,560,000	130㎡	70㎡	6.3~7.2m	1st floor: 1.5t/㎡	Parking for 3 vehicles
Bldg. 3	¥2,925,000	260㎡	115㎡	6.2~7.2m	1st floor: 1.5t/㎡	Parking for 6 vehicles

\*Work space can accommodate hoist cranes up to 5 tons.

④ Molding center

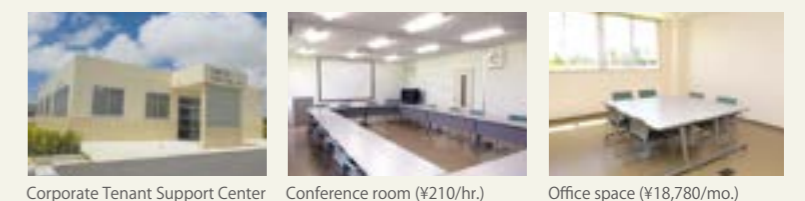
The Mold Technology Research Center is attached to the Leased Plant for the Industrial Materials Industry No. 1 Building. This organization works on initiatives such as personnel training, R&D and the provision of equipment (for a fee) to improve mold and die technologies for companies in Okinawa. (Established in April 2010)

Main maintenance equipment at the Mold Technology Institute

<b>Finishing machine</b>  High-Speed Machining Center  5-axis machine		<b>Analytical software</b>  Thermal fluid analytical software  Injection molding analytical software		<b>Other</b>  Coordinate measuring machine
 Multitasking machine  Diesinking machine		 Non-linear analytical software  Multibody dynamics analytical software		 3D real surface view microscope
<b>Forming machine/molding machine</b>  Injection molding machine  Magnesium injection molding machine		<b>Electric vehicle-related</b>  Chassis dynamo  Regenerative charging/discharging apparatus		 Heat treat furnace  Laser overlaying/welding machine
 Selective laser sintering machine		 Maintenance elevator		

Support facilities Corporate Tenant Support Center (Tel : 098-921-0225 / Fax: 098-921-0325) 12-94 Suzaki, Uruma, Okinawa 904-2234

The Center provides support for companies that are already tenants in International Logistics Hub Industry Development Zone Uruma/Okinawa District or that are preparing to locate to the Zone. The facility, which boasts support offices, conference rooms, administrative offices, and more, supports companies in starting up and in beginning operation, with the aim of encouraging additional companies to locate in the Zone.



Corporate Tenant Support Center Conference room (¥210/hr.) Office space (¥18,780/mo.)



### ③ Industrial water

The industrial water supply on the main island of Okinawa has a daily capacity of approximately 30,000m<sup>3</sup>. The planned water capacity for the entire Nakagusuku Bay Port Shinko District is 6,800m<sup>3</sup> per day, 4,700m<sup>3</sup> of which is for the former Special Free Trade Zone.

Water application : 100m<sup>3</sup> or more per day (10m<sup>3</sup> or more per day at Itoman Industrial Zone/Nakagusuku Bay Port Shinko Industrial Zone areas)

Contract-based : With this system, the payer is liable for the cost of the entire contracted water volume even if the volume actually used is less than the volume specified in the contract.

\* The standard period from the start of construction to the start of industrial water usage is 2 months.  
\* For inquiries regarding use or other matters concerning industrial water, contact the Okinawa Prefectural Enterprise Bureau, Water Supply Management Division (098-866-2810).

### ④ Water supply

Water rate = (basic fee + excess usage fee) × 1.10 (consumption tax)

### ⑤ Electricity

If your business plans to use electricity, renewable energy or another energy source, please contact The Okinawa Electric Power Company, Incorporated.  
\*Inquiries: The Okinawa Electric Power Company, Incorporated (0120-586-391)

《Fees》

Basic fee	35yen (w/o tax) / m <sup>3</sup>
Excess usage fee	70yen (w/o tax) / m <sup>3</sup>

《Former Special Free Trade Zone Plan Water Volume》

Daily volume	4,700m <sup>3</sup>
Current contract water volume	4,393m <sup>3</sup>

As of end of December 2022



Okinawa Prefectural Waterworks Bureau

《Water pressure》0.05 MPa or greater (minimum water pressure at the end of the distribution pipe)

《Water quality》

water temperature	turbidity (degree)	pH	alkalinity (mg/L)	hardness (mg/L)	total dissolved solids (mg/L)	chloride concentration (mg/L)	iron (mg/L)
room temperature	20 or less	6.5~8.0	75 or less	120 or less	250 or less	80 or less	3.0 or less

Sources : Okinawa Industrial Water Supply Regulations (water application volume, water quality, water pressure), Okinawa Industrial Water Fee Collection Regulations (fees)

By application	Standard charge (per month)	Excess usage charge per 1 m <sup>3</sup>
For business	Up to a water quantity of 10m <sup>3</sup>	Charge 1,554 yen
		11 to 30 cubic meters 210 yen
		31 to 100 cubic meters 240 yen
		101 to 300 cubic meters 264 yen
		Above 301 cubic meters 284 yen

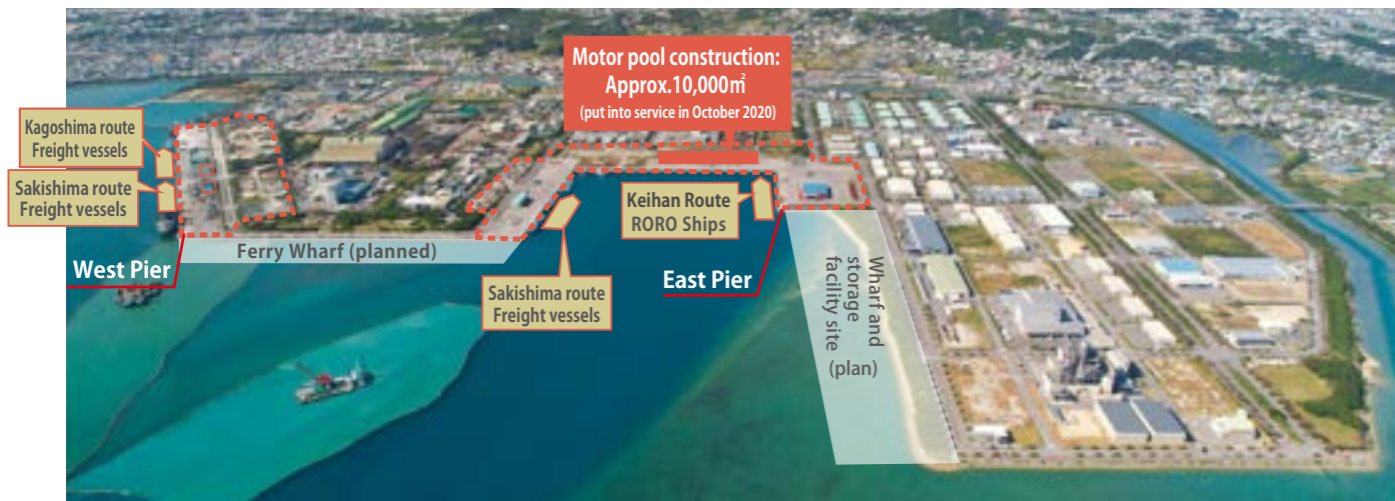


Uruma City Water Rates Price List

## (4) Nakagusuku Bay Port Shinko District Overview

### ① Status of Wharf Usage

- We will promote the enhancement/expansion of logistics capabilities through the development of industrial supply ports and the commissioning of ocean liners.
- West Wharf: Mainly used for bulk cargo such as sand, gravel, animal feed, and scrap. Cargo ships on the Kagoshima and Sakishima routes call at the port here.
- East Wharf: In addition to the use of building materials, RORO vessels on the Keihan route call at this port. A motor pool for the temporary storage of automobile cargo was constructed and put into service in October 2020.
- We will continue to enhance/expand logistics capabilities through work to construct facilities and establish/expand shipping routes.



### ② Keihan Route

○Services RORO ships that depart from Naha Port and call at Osaka Port and Tokyo Port via the Nakagusuku Bay Port New Port Area.

	Sun	Mon	Tue	Wed	Thu	Fri	Sat
Entry		Naha New Port 7:00	Nakagusuku Bay Port 20:00		Osaka South Port 8:00	Tokyo Ariake Port 9:00	Osaka South Port 14:00
Departure		Naha New Port 17:00	Nakagusuku Bay Port 22:00		Osaka South Port 12:00	Tokyo Ariake Port 19:00	Osaka South Port 20:40

○Cargo acceptance: Application deadline: 8:30am on weekdays to 5:30pm on the day before the vessel's arrival. Weekdays: 8:30am - 5:00pm  
\*Only bring in cargo after applying. If you do not apply, we may not be able to accept your cargo.

○Receipt of cargo for loading: Delivery time: 8:30 to 17:00 on weekdays  
Delivery on the day of vessel's arrival at port: Until 21:30

\*Please contact us in advance for cargo delivery outside the above weekday hours.  
\*Cargo delivery and pick-up on Saturdays and holidays will be decided upon by prior arrangement.  
○Inquiries: Cargo acceptance - please contact the Chubu Branch Office of Okinawa Port Transport Co., Ltd. At 098-923-0411. Shipping routes - please contact the Sales Department of Ryukyu Kaiun Co., Ltd. At 098-868-8162.



\*From the Ryukyu Kaiun Co., Ltd. Website  
RORO ship Name of vessel: Nirai Kanai II Gross tonnage: 11,687 tons Length: 181.51 meters



### ③ Kagoshima route

○A cargo ship that connects Nakagusuku Port with Kagoshima Prefecture's Shibushi Port and Kagoshima Taniyama Port has been launched.

	Sun	Mon	Tue	Wed	Thu	Fri	Sat
Arrival		Shibushi Port 8:00	Kagoshima Taniyama Port 8:00		Nakagusuku Port 8:00		Kagoshima Taniyama Port
Departure		Shibushi Port 17:00	Kagoshima Taniyama Port 17:00		Nakagusuku Port 17:00		

○Cargo reception: reception deadline is 3:00 p.m. the day before arrival  
Deadline for loading cargo is 3:00 p.m. the day before arrival

○Unloading: delivery is 3:00 p.m. on weekdays  
Ship arrival date: none

○Inquiries: Nakagusuku Port Transportation Office, Sales Department, 098-934-0781  
MKLINE Co., Ltd., Sales Department, 098-876-3300



○Main calling ports and ships  
Multi-purpose cargo ship  
Ship name: Seizan Maru No.8  
Gross tonnage: 498G/W  
Overall length: 76.20m



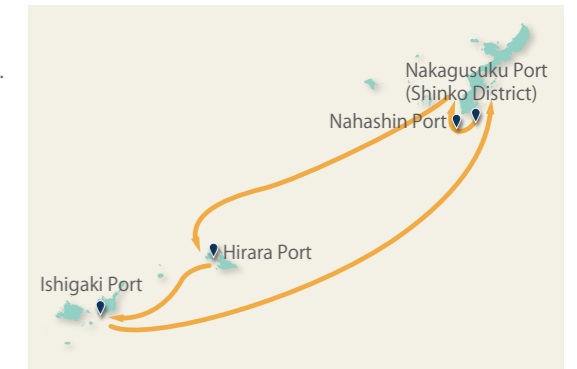
### ④ Sakishima route

- The cargo ship that departs from Naha Port, then passes by Hirara Port (Miyako Island) and Ishigaki Port, and calls at Nakagusuku Port (Shinko District) is making unscheduled calls.
- Currently, the recycling cargo (mainly used automobiles and scrap metal), which will be used as renewable resources, is collected from Miyako Island and Ishigaki Island, and will be transported to Nakagusuku Port (Shinko District) on an inbound trip (trip back from Sakishima).



Image source: Nansei Kaiun Co., Ltd. website

○Main calling ports and ships  
Multi-purpose cargo ship  
Ship name: Harimizu  
Gross tonnage: 499G/W



### ⑤ Parking lot for temporary storage of automobile cargo

- Many automobile-related companies are located in the central region of Okinawa Island, including used car retailers, used car auction sites, and storage centers for kei-car manufacturers. Therefore, we aim to make Nakagusuku Port (Shinko District) a base for gathering automobile cargo, and we are working on building a parking lot to temporarily store automobile cargo.
- So far, approximately 10,000m<sup>2</sup> have been built and were put to service in October 2020. We will continue to work on expanding its space.

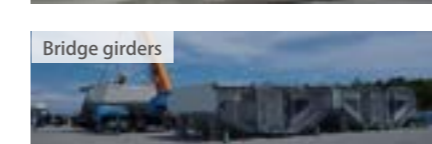


○The parking lot is paved with asphalt to protect the automobiles from stains or damage caused by mud or sand. It is also equipped with an anti-sand net fence for security and to prevent salty sea breeze.

### ⑥ A wharf site for heavy cargo

- At Nakagusuku Port (Shinko District), heavy cargo can be handled at the wharf site adjacent to the quay.
- The -7.5m, -10m, and -13m quays, as well as the wharf site behind them at the west wharf have security measures based on the SOLAS Convention. We plan to implement them in the east wharf as well in the future.

- The area that can be used for heavy cargo is the one with the red line filled with yellow in the right figure. (The size is approximate.)
- It is paved with asphalt.
- In-operation image (reference)



Google Image ©2020 Maxar Technologies, Planet.com

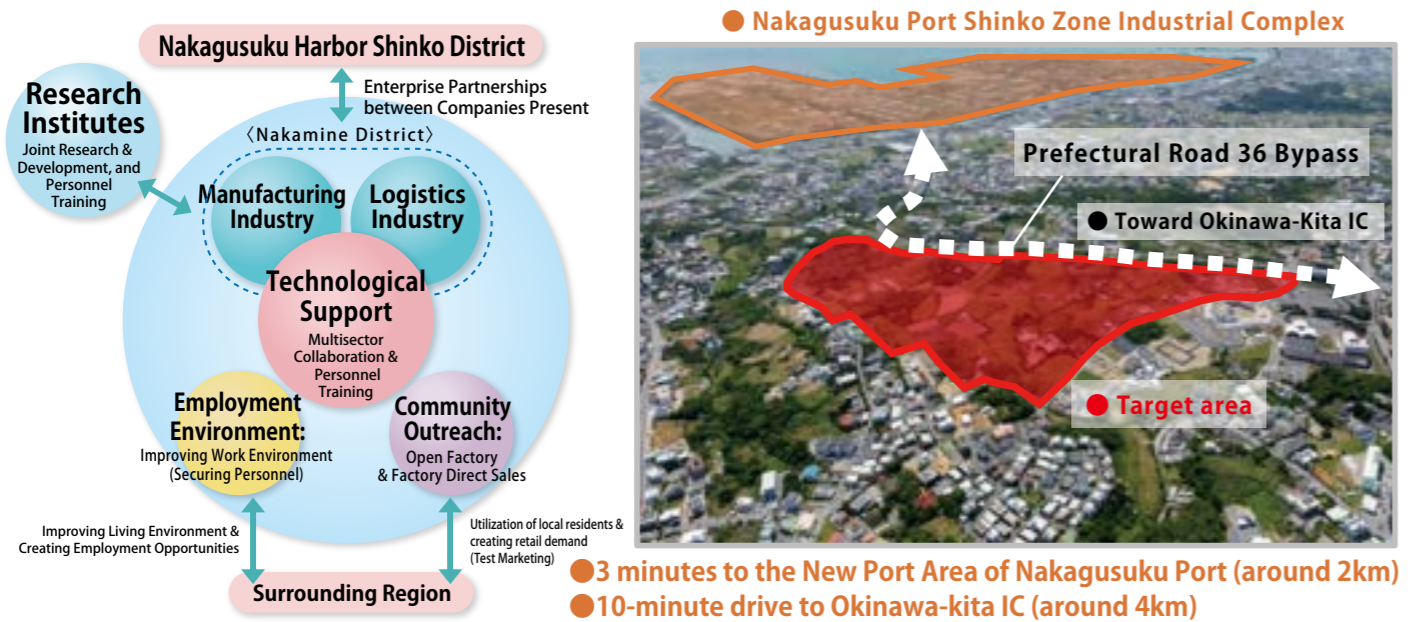


# 8 New industrial sites in Okinawa Prefecture

## (1) Nakamine & Uezu Districts in Uruma City

### Overview & Location

Uruma City is developing plans for a new industrial zone to secure additional employment opportunities for the population and land for industrial clusters. At the moment, the Nakamine & Uezu districts have been selected as candidate sites as they are poised to become the drivers of economic development and expected to share industrial functions with the Nakagusuku Harbor Shinko District. Surveys and studies aimed at establishing fundamental infrastructure there is currently underway.



### Development Proposal

Sector	Name	Area (ha)	Percentage (%)	Key Features
Roads	City Planning Road (W=14m)	0.69	3.47	Extension L=418m
	District Street (W=12m)	0.40	2.01	Extension L=244m
	District Street (W=9m)	0.36	1.81	Extension L=426m
	District Street (W=6m)	0.23	1.16	Extension L=244m
Parks & Green Spaces	Parks & Green Spaces	0.77	3.88	
	Retention Basins	0.90	4.54	V=19,300m <sup>3</sup>
Public Spaces	Public Spaces Subtotal	3.35	16.87	
	Logistics & Manufacturing Industry Zone	15.01	75.66	Including green buffer zone 12.79+2.22=15.01ha
Green Buffer Zone	Green Buffer Zone	—	—	
	Civic Center Zone	0.62	3.13	
Residential Zone	Residential Zone	0.68	3.43	
	Transmission Tower Zone	0.18	0.91	
Residential Land Subtotal	Residential Land Subtotal	16.49	83.13	
	Total	19.84	100.00	

\*This is nothing more than an example and may be changed in the future.

### Planning Schedule

Development Schedule	2021	2022	2023	2024	2025	Later
Attracting Businesses	Promotional Activities to Attract Businesses					Handover of developed block as need arises
Infrastructure Planning & Infrastructure Development	Business survey/basic design	Business plan/implementation design	Business license	Infrastructure development (preceding block)	Infrastructure development	

\*This is only a tentative schedule and is not final (as of January 2022).

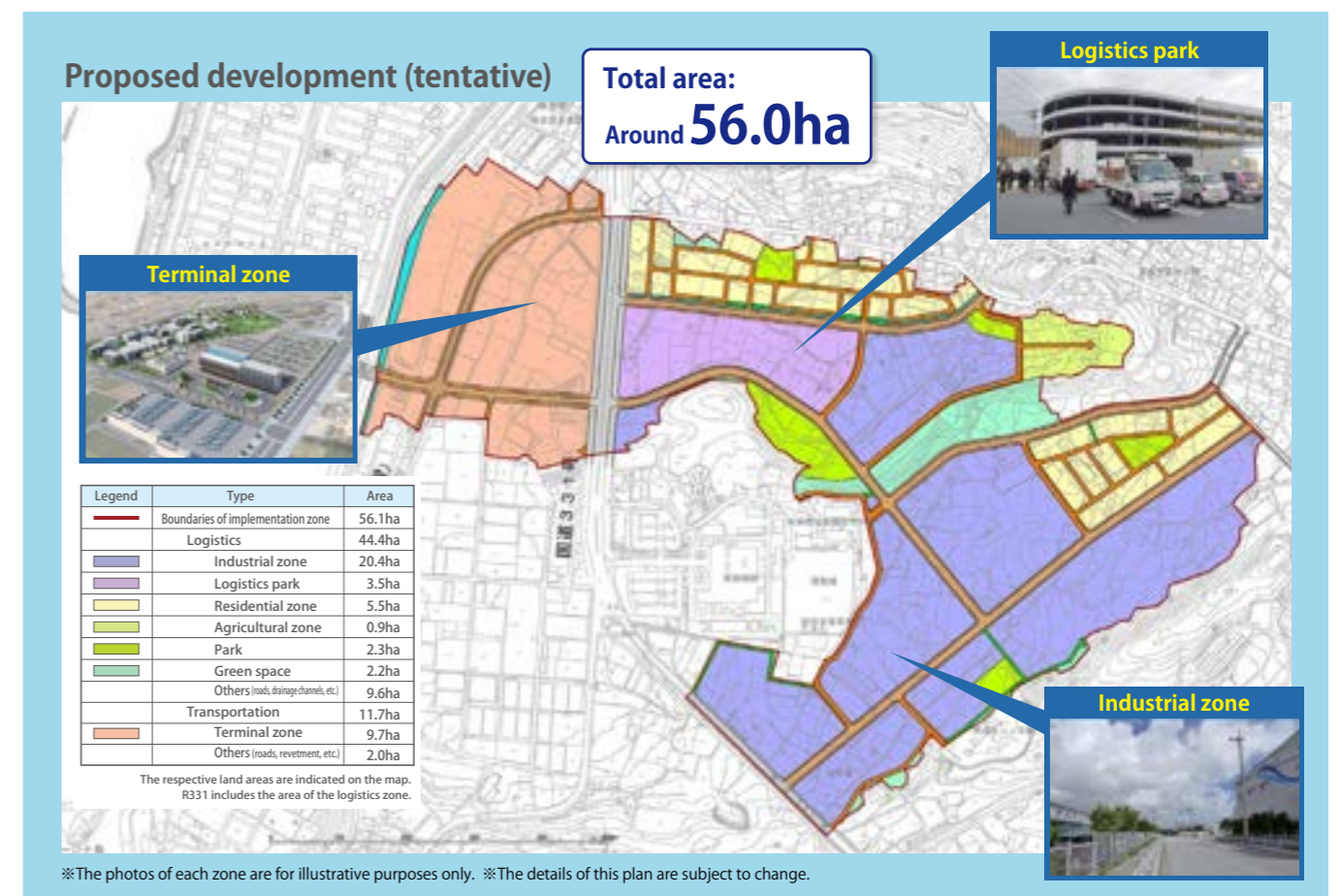
■ About attracting businesses/Industrial Policy Division, Department of Economy, Uruma City Council; TEL: 098-923-7611  
 ■ About development plans/development projects Section name: Uruma City Planning Department, Project Promotion Section 1; Phone number: 098-973-5373

## (2) Maezato District, Itoman City

### Overview and Location Map

The planning area is located about 15 minutes (10.4km) by car from Naha Airport, and the northwest part of the area is adjacent to the existing urban area. National Route 331 Itoman Road runs through it, providing convenient transportation access.

Location	Distance
Naha Port	Around 20 minutes (12.6km)
Naha Airport IC	Around 15 minutes (10.4km)
Tomigusuku IC	Around 19 minutes (9.1km)
Tomigusuku/Nakachi IC	Around 13 minutes (8.6km)
Prospective Toyosaki Industrial Site	Around 6 minutes (4.1km)
Itoman Industrial Park	Around 5 minutes (3.1km)
Itoman City Hall	Around 3 minutes (1.0km)



※The photos of each zone are for illustrative purposes only. ※The details of this plan are subject to change.

### Planning Schedule

Project details	2021	2022	2023	2024	2025	2026	2027
Project approval		Approval					
Commencement of construction					Construction		
Application / Distribution						Application	Distribution

※This schedule is subject to change.

■ Enquiries regarding attracting new companies / Section: Commerce, Industry, and Fisheries Section, Economy Department, Itoman City / Telephone: 098-840-8137  
 ■ Enquiries regarding the planning schedule / Section: Urban Planning Section, Construction Department, Itoman City / Telephone: 098-840-8141



(3) Tomoyose-Higashi area, Yaese Town

Overview and map of location

Located next to Prefectural Route 48 and near many major roads including the Naha Airport Expressway (Haeburu-Minami Interchange) and National Highway No. 507, this area in the northeast of Yaese Town couldn't be more conveniently located.

To get the most out of this prime land and vitalize Yaese Town, measures are underway to attract operators of commercial buildings such as retail stores, industrial facilities such as logistics hubs and warehouses, and business facilities such as offices.



● 2 minutes by car (around 1km) to Haeburu-Minami Interchange

Layout (tentative)

Map of planned area (Tomoyose-Higashi Logistics Service District)

- Roadside District (quasi-industrial district): Around 1.6ha
- Logistical Services District (quasi-industrial district): Around 4.5ha
- Business District (quasi-industrial district): Around 0.8ha

- Allocated area
- Roadside District
- Logistical Services District
- Business District

Planned schedule

Work	2022	2023	2024	2025	2026	2027	2028
Recruitment of companies	Recruitment of companies/application process						
Development plan	Decision of urban planning	Surveying/measurement/design/project planning/application for permits for development, etc./building of foundations					

\*The above schedule is correct at present but has not been finalized. (As of January 2023)

■ Inquiries about recruitment of companies: Planning and Finance Division, General Affairs Department, Yaese Town Hall (TEL 098-998-2668)

■ Inquiries about urban planning: Urban Development Division, Economic Affairs and Construction Department, Yaese Town Hall (TEL 098-998-6989)

# 9 Comments from companies that have expanded into Okinawa Prefecture



I-PEX Inc.

○Industry type: Electronic component manufacturing

○Expansion into Okinawa: February 2019 ○Location: Tomigusuku City, Uruma City

Q1. What led to I-PEX expanding into Okinawa?

We opened our International Management Office Administration Headquarters in Tomigusuku City in February 2019 to provide support for our overseas sales staff and 17 international companies. In May of the same year, we established "the I-PEX Global Operations, Inc." In January 2020, we opened a factory at the Okinawa Machine Parts and Tooling Industries Promotion Facility in Uruma City. In December 2022, we opened the Okinawa Innovation Center, our third site.

Q2. Why did you choose Okinawa?

We chose Okinawa because it has a well-developed logistics and air transport network because of its tourism and a large number of multilingual personnel proficient in English and Chinese. There are also many industrial education institutions producing 3,000 prospective engineers every year, which gives us an advantage in securing young, talented personnel.

Q3. What message would you give to companies who are considering setting up in Okinawa?

The Okinawa prefectural government and the Japanese government's Okinawa General Bureau provide extensive support to promote the manufacturing industry, and there are various advantages for companies that take on new initiatives. There are opportunities to connect with companies in the prefecture and great potential for new discoveries and fresh business ideas.



FMD Co., Ltd

○Industry type: Medical devices

○Expansion into Okinawa: February 2018 ○Location: Uruma City

Q1. What led to FMD expanding into Okinawa?

Producing guidewires requires a large workforce, so securing personnel is essential for business expansion. However, we could not hire as many people as we wanted at our existing sites, and we were considering expanding to include overseas locations. In 2016, we attended a seminar to attract companies to Okinawa and decided to establish a site here because there are a lot of young workers here and it's a good location from the perspective of BCP.

Q2. Why did you choose Okinawa?

We chose Okinawa because of how easy it is to hire young talent, its incentive program and its proximity to other Asian countries. With markets expanding into Southeast Asia and China, the former Special Free Trade Zone of Uruma City, where we established our Okinawa site, was an excellent base for overseas exports.

Q3. What initiatives do you want to pursue in the future at your Okinawa location?

Part of our production process is currently carried out at our Aichi factory, so we plan to expand our Okinawa site so that in future we can do all of our production at our Okinawa factory.



NanoSystem Solutions, Inc.

○Industry type: Semiconductor manufacturing equipment

○Expansion into Okinawa: April 2015 ○Location: Uruma City

Q1. What led to NanoSystem Solutions expanding into Okinawa?

When we started developing laser processing systems, we moved our head office here from Tokyo using the Okinawa New Industry R&D Support Project. Our customers are located mainly in Kyushu, Taiwan, China and other parts of Asia. In Okinawa, we have a geographical advantage that allows us to offer services and support to customers from Japan and overseas in the same way as if we were providing it from the Tokyo metropolitan area.

Q2. Why did you choose Okinawa?

Okinawa has an ideal environment for startups. They offer factories for rent, capital loan schemes, business grants, and transportation subsidies. The Okinawa prefectural government reached out to startups with business plans that were not attracting attention in metropolitan areas.

Q3. What message would you give to companies who are considering setting up in Okinawa?

The climate is consistent without much variance in temperature throughout the year, which helps to keep cleanroom operating costs low and makes it easy to schedule production and shipments. Okinawa is also a well-known area, which adds to our appeal among customers throughout Asia.



# 10 An aviation-related business cluster focused on maintenance, the first in Japan.

## (1) Initiatives for the Creation of an Aviation-related Industry Cluster

Okinawa Prefecture aims to create an aviation-related industry cluster centered on the first domestic aircraft maintenance business, leveraging its advantages such as proximity to Asia, which is expected to see increased demand for air transportation as a result of global economic growth. As the first step of these efforts, Okinawa Prefecture established an aircraft maintenance facility at Naha Airport which will serve as the starting point for the aviation-related industry cluster. MRO Japan Co., Ltd. has moved into this facility, and as a core company of the aviation-related industry cluster, it is expected to bring economic and employment benefits.

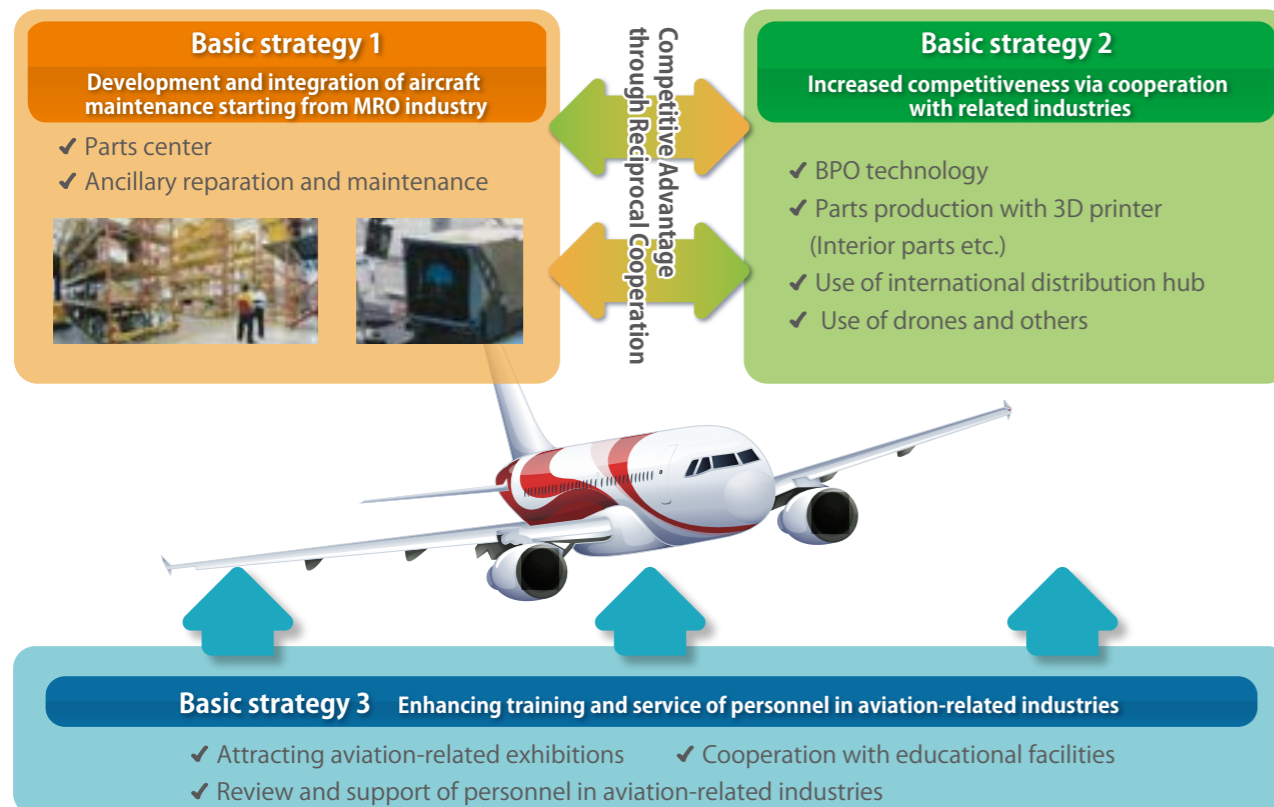


Maintenance of aircraft (Large dock inside the aircraft maintenance facility, MRO Japan Co., Ltd.)

Diverse demand deriving from aircraft maintenance is anticipated, including for maintenance of equipment and engines used on aircraft, etc., storage and distribution of parts, maintenance-related consulting, research and development, and training of personnel engaging in aviation-related industries, etc. To meet this foreign and domestic demand, Okinawa Prefecture is working to recruit companies and train personnel based on its action plan for establishing an aviation-related industry cluster.



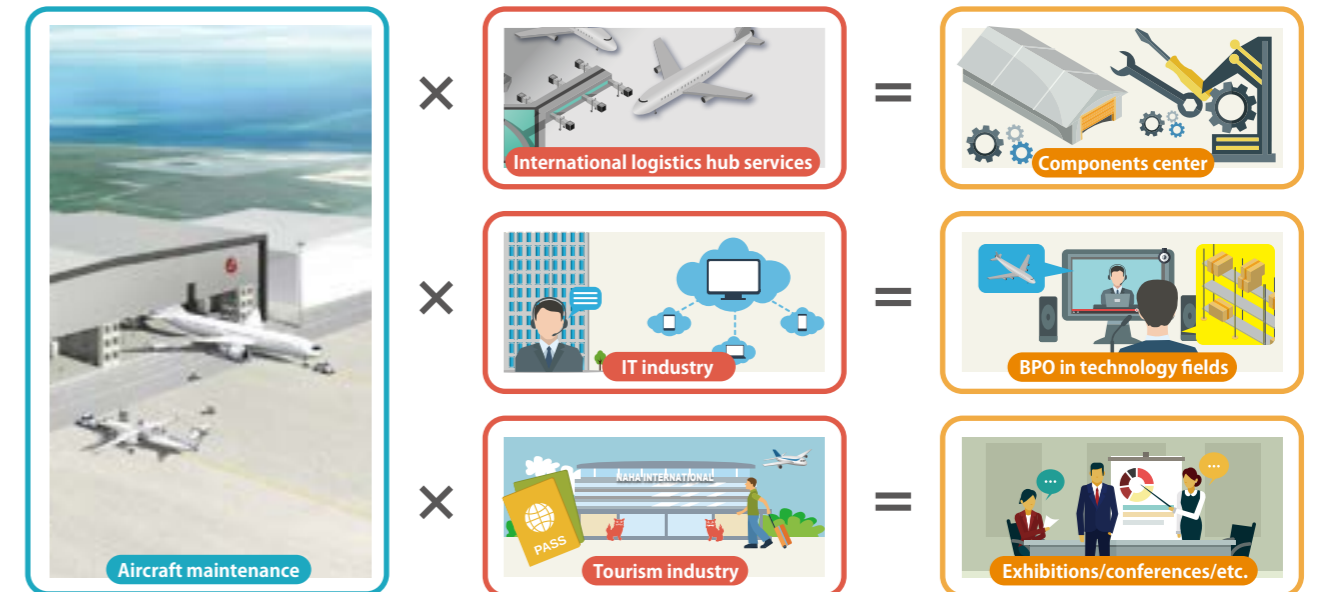
Okinawa Prefecture Aviation-Related Industry Cluster



## (2) Aviation-related businesses leverage Okinawa's strengths

Okinawa offers a variety of advantages to companies doing business there, including tax incentives in the international logistics industry zone, proximity to the center of demand in Asia, and an abundant workforce. Furthermore, companies can expect to take advantage of Naha Airport's function as an international logistics hub, as well as partnerships with IT companies clustering in the area, etc.

### Examples of Coordination with Existing Industry

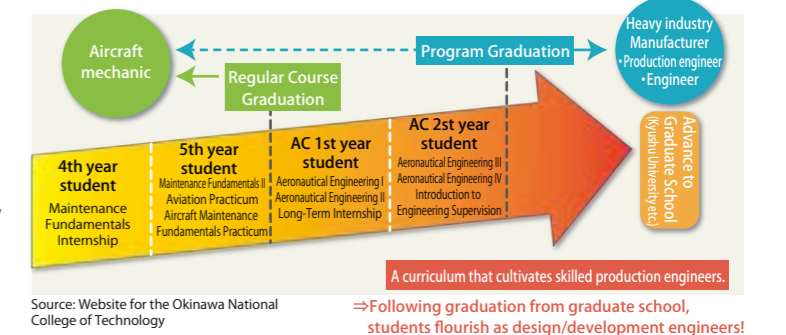


## (3) About Aviation-related Personnel Training Initiatives in Okinawa

The National Institute of Technology, Okinawa College established an Aviation Engineer Program in 2015, and is working to educate talent capable of contributing to aviation-related industries. As of March 2020, 61 individuals have completed the course and secured employment with aviation companies or companies specializing in engine design and aircraft maintenance, etc.

Additionally, there have been cases of graduates of Okinawa universities, technical high schools, and regular high schools securing employment with maintenance companies.

### Outline of Aviation Engineering Program



Source: Website for the Okinawa National College of Technology

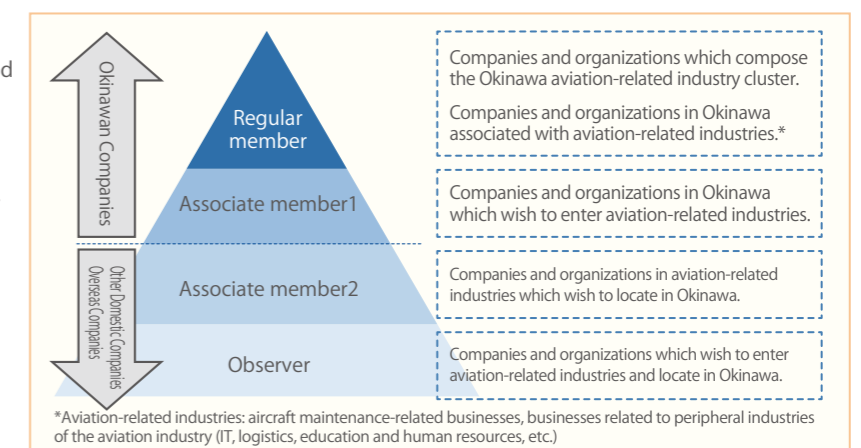
## (4) About the Okinawa Aviation Industry Cluster Promotion Association

Okinawa Prefecture collaborated with foreign and domestic companies to found the Okinawa Aviation Industry Cluster Promotion Association with the goal of promoting aviation-related industries in order to create a cluster with a concentration of aviation-related industries, including peripheral industries, centered on aircraft maintenance, and began recruiting members in October 2019. 23 members have participated as of the end of March 2023.

[Initiatives]

- Disseminating information via digital newsletters and websites, etc.
- Efforts to facilitate improvements in productivity and competitiveness through collaboration by companies
- Publicity and promotional activities to encourage development of sales channels
- Initiatives to train and secure personnel required by aviation-related industries
- Encouraging companies entering aviation-related industries

Joining this association is free of charge. For details on applying and registered members, please refer to the website on the right (see QR Code).



\*Aviation-related industries: aircraft maintenance-related businesses, businesses related to peripheral industries of the aviation industry (IT, logistics, education and human resources, etc.)



# 11 The IT Industry in Okinawa

## Okinawa IT Shinryo Park: The bridge between Japan and Asia

The Okinawa IT Shinryo Park is a big project that will make Okinawa Prefecture a major hub for domestic and international information and communication related industries. The word "Shinryo" means a bridge to Asia.

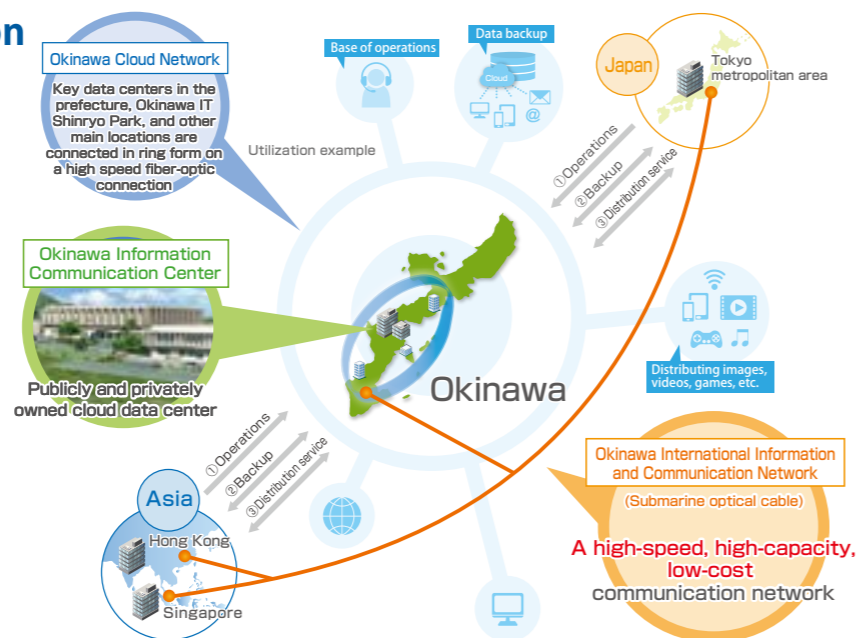


Okinawa IT Shinryo Park

- ① Core Function Support Facility
- ② Enterprise Location Promotion Center
- ③ Asia IT Training Center
- ④ Information and Communication Equipment Verification Facility
- ⑤ Enterprise Cluster Facility No. 1
- ⑥ Enterprise Cluster Facility No. 2
- ⑦ Enterprise Cluster Facility No. 3
- ⑧ Enterprise Cluster Facility No. 4
- ⑨ Enterprise Cluster Facility No. 5
- ⑩ Enterprise Cluster Facility No. 6
- ⑪ Asia IT Business Center
- ⑫ Corporate Concentration Facility, Bldg. No. 7

### The International Information and Communication Hub Connecting Japan and Asia

In Okinawa, the Okinawa International Information Communication Network (submarine fiber optic cable) directly connects the Tokyo metropolitan area, Okinawa, and Asia, the Okinawa Cloud Network interconnects major data centers in the prefecture, and a public-private cloud data center. These form a single package to create a cloud environment supported by both public and private sectors. By providing these advanced information and communication infrastructures, we are able to offer high value-added services that support cloud computing, big data, and other technologies, as well as an environment for creating interactive business across Asia.



## ResorTech Okinawa

ResorTech Okinawa is a suite of initiatives in Okinawa for social and economic DX to contribute to the realization of a digital society. It spearheads various measures, including the promotion of collaboration between IT and other industries.

### Website

This website provides useful information for companies seeking to digitalize or adopt DX, including examples of cutting-edge projects in Okinawa and details on support and events.



### ResorTech EXPO in Okinawa

An international IT trade fair will be held with many companies from Okinawa, elsewhere in Japan and abroad. It will feature programs such as exhibitions of solutions, business matching, and DX-related seminars.

**ResorTech EXPO 2023 in Okinawa**



Next expo

**Period: November 9 (Thu.) - 10 (Fri.), 2023 Venue: Okinawa Arena**

ResorTech EXPO in Okinawa Steering Committee Secretariat (inside IT Innovation and Strategy Center Okinawa)  
E-mail : [resortech@isc-okinawa.org](mailto:resortech@isc-okinawa.org)



Industlink, our service for connecting other industries with Okinawa-based IT companies, provides companies with support for implementing DX, including researching and comparing IT solutions to solve issues faced by the company. You can also request a consultation through the Industlink website.

Industries	Matching site	IT companies, universities, research institutes
<ul style="list-style-type: none"> <li><b>Agriculture</b>: Operators want to use AI to manage harvest and irrigation.</li> <li><b>Construction</b>: Operators want to share site photo data on the cloud.</li> <li><b>Tourism</b>: Operators want to provide personalized services to increase profitability.</li> <li><b>Logistics</b>: Operators want to optimize delivery routes to improve efficiency.</li> </ul>	<ul style="list-style-type: none"> <li><b>Industlink</b>: Searching for solutions and ways to solve them.</li> </ul>	<ul style="list-style-type: none"> <li><b>IT companies, universities, research institutes</b>: Suggests solutions to business issues. Suggests methods for solving issues. Provides IT solutions.</li> </ul>

Industlink connects companies facing issues with IT solutions providers who can solve them.

Industlink's office provides free consultations for business operators who have concerns!

If you have any concerns about adopting IT, get in touch!



### ICT Industry Support Guide

Here you can find helpful information for starting an IT or digital-related business or setting up a new site here, including Okinawa's support systems and extensive infrastructure that supports IT business and industry DX.





# 12 Okinawa's energy policy for creating a carbon-free society by FY2050

To play its part in building a carbon-free society in FY2050, Okinawa will promote the expansion of clean energy facilities while encouraging the use of special taxation such as the Industrial Innovation Promotion Zone System (see page 21 of the Industrial Location Guidebook).

# society by FY2050



## ● Okinawa Prefectural Clean Energy Initiative

Established March 2021 (amended March 2022) \*Okinawa Prefectural Energy Plan

### Future vision for FY2030

"An Okinawan island energy society with low carbon emissions and resilience against disasters"

3 fundamental goals

Transition to low-carbon energy

Transition to autonomous, decentralized energy

Transition to locally produced, locally consumed energy

### Quantitative goals for FY2030

① Ratio of power from renewable energy

③ Energy self-sufficiency rate (linked to ①)

#### Challenging goal

(the goal that will be set if technological innovation takes place in future and that new technology is used)

26%

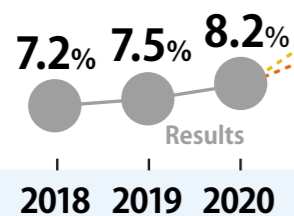
7%

#### Ambitious goal

(steady progress)

18%

5%



② Ratio of hydrogen/ammonia power Reach 1% by FY2030



### Action plan (implementation of specific measures) \*Excerpt describing main initiatives

Key projects (measures being taken with the aim of achieving goals for FY2030)		Challenging projects (experimentation for implementation of future technologies)	
① Introduction of renewable energy across a wider area	<ul style="list-style-type: none"> <li>Build smart community model on small, remote islands (use results of prefectural proofs of concept to encourage adoption of projects)</li> <li>Further introduction of biomass</li> <li>Wider adoption of wind power</li> <li>Wider adoption of solar power at farms, ports, etc.</li> </ul>	① Use of next-generation energy sources (hydrogen, ammonia, etc.)	<ul style="list-style-type: none"> <li>Encouraging exploration of possibilities, creation of proof-of-concept projects, etc.</li> <li>Building hydrogen and ammonia supply frameworks</li> </ul>
② Expansion of locally consumed renewable energy	<ul style="list-style-type: none"> <li>Promotion of model for third-party ownership of solar power</li> <li>Wider adoption of storage cells, etc.</li> </ul>	② Promotion of development of alternative energy sources such as marine renewable energy	<ul style="list-style-type: none"> <li>Promotion of development and practical use of marine renewable energy</li> </ul>
③ Wider use of natural gas	<ul style="list-style-type: none"> <li>Wider use of soluble natural gas</li> <li>Promotion of fuel transition by industries, etc.</li> </ul>	③ Creation of smart cities	<ul style="list-style-type: none"> <li>Building models to solve social issues, centering on energy management system technology</li> </ul>
④ Further popularization of EVs	<ul style="list-style-type: none"> <li>Better conditions for EV usage</li> <li>Use of EV-based energy management system</li> </ul>		

Inquiries

Industrial Policy Division TEL 098-866-2330 FAX 098-866-2440

\*Source: Brochure by Industrial Policy Division, Okinawa Prefectural Government (FY2022 edition)

## ● Okinawa's one-stop consultation service for the adoption of clean energy

Industrial Policy Division, Department of Commerce, Industry and Labor, Okinawa Prefectural Government

A consultation service will open in Okinawa as part of an initiative to promote more widespread adoption of clean energy in the prefecture. The consultation service provides information and advice on support systems, such as Japanese and Okinawan government subsidies and taxation systems, to organizations considering measures such as installing renewable energy equipment. It also provides consultation and support to Okinawa municipalities that aim to adopt renewable energy more widely.

Information and advice on subsidies and other assistance

Promoting the use of special taxation measures for renewable energy equipment and similar purposes

Consultation and support for municipalities in Okinawa for wider adoption of renewable energy

Systems	Details
Information and advice on subsidies and other assistance	Provides information on support systems, such as Japanese and Okinawan government subsidies for measures such as the installation of renewable energy equipment, and offers support for any necessary procedures
Promoting the use of special taxation measures for renewable energy equipment and similar purposes	Special taxation measures for renewable energy equipment and similar purposes (Business Innovation Zone System) <ul style="list-style-type: none"> <li>Investment tax credit (Up to 15% deduction from corporate tax)</li> <li>Property tax exemption</li> </ul>
Consultation and support for municipalities in Okinawa for wider adoption of renewable energy	Offers services such as consultation and support for Okinawa municipalities aiming for wider adoption of renewable energy



### Okinawa's one-stop consultation service for the adoption of clean energy

Scan the QR code to the right for contact information and more details



Okinawa's one-stop consultation service for the adoption of clean energy

#### Advantages of installing renewable energy equipment:

- Reduction in electricity costs
- Electricity is available even in the event of a disaster
- Improvement of corporate image
- Reduction of CO<sub>2</sub> emissions



# 13 Okinawa Prefecture's bio industry

## Building a world-class glocal community

### Okinawa Biocommunity



#### Okinawa's strengths

○As the only prefecture in Japan with a subtropical oceanic climate, Okinawa has among the greatest biodiversity in Japan, particularly in marine life, providing an abundance of resources for the bio industry.

#### Certification

○In December 2022, Designated by the Japanese government as a Regional Bio-Community in recognition of its global importance in the bio realm due to its abundant bio resources and its physical location, which is suited as an Asian hub.

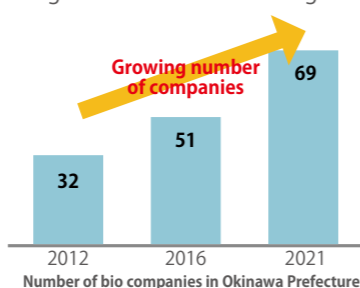
#### Cooperation

○Okinawa Prefecture's biocommunity works together with major Japanese bio organizations, including global biocommunities such as BioCK (Biocommunity Kansai) and GTB (Greater Tokyo Biocommunity), to provide support for research, technology and product development, along with information sharing and matching services.

### Incubation facilities

○Incubation facilities such as Okinawa Health Biotechnology Research & Development Center and Okinawa Biotechnology Business Support Center carry out cutting-edge research and development using biotechnology.

Inquiries: Okinawa BioCommunity office  
TEL: 098-982-1100  
Website: <https://okibic.jp/>



Okinawa Health Biotechnology Research & Development Center

## Initiatives to promote bio industry

### Support and personnel development for research, development, commercialization, etc.

Inquiries: Manufacturing Promotion Division, Department of Commerce, Industry and Labor  
TEL: 098-866-2337

#### Research, development and business support

#### ○Initiatives to promote commercialization in the bio industry

Support (subsidies) for research and development by current and prospective bio companies

#### ○Initiatives to provide business support for bio companies

Hands-on support including procurement of funding, person

#### Development of advanced personnel for the bio field

#### ○Data science personnel training

Training courses for bio-informatics personnel who can work in a variety of fields including drug discovery and commercialization of products such as health products (for companies, etc. in Okinawa)

#### Bio-informatics personnel training courses

##### Introductory course

The basics of data science for life sciences and information sciences

##### Intermediate course

Statistical data, algorithms, machine learning, bio-informatics

21 lectures in total (theoretical and practical) in 2022  
For workers, researchers, students, etc. in Okinawa Prefecture

### Health foods

Inquiries: Okinawa Prefecture Health Industry Association  
TEL: 098-975-6230  
Website: <http://www.kenshoku-oki.com/>

#### ○Platform to support companies in strengthening their brand power

This platform helps health food companies in Okinawa to find strategic, cross-sectional solutions to issues they face in areas such as functionality research, marketing, product development and exploring sales routes.

#### WELLNESS OKINAWA JAPAN (WOJ): A proprietary certification system



To qualify for this certification, the certifying body must be satisfied that the product has functional value, is safe, and possesses emotional value unique to Okinawa.



### Building an industry hub centering on the health and medical fields

Inquiries: Manufacturing Promotion Division, Department of Commerce, Industry and Labor  
TEL: 098-866-2337

○Located centrally among East Asia countries with its own airport, Okinawa is a prime hub for cutting-edge medical businesses such as regenerative medicine, and has the potential to become a bio-hub for the health and medical fields.

○Okinawa Prefecture is working to build an industry hub centering on the health and medical fields to meet potential future demand.



# 14 Research Institutes in Okinawa

Okinawan research institutes such as the Okinawa Industrial Technology Center and the Okinawa Biotechnology Business Support Center are located in the Uruma/Okinawa district, an international logistics hub. Various other research institutes are located within the University of the Ryukyus, which is within a 30-minute drive. We support businesses in the area through applied research, human resources training, and the provisions of scientific and technological information based on an organic collaboration with the institutions.

	Name	Location	Main Business or Area of Research	TEL	QR
Okinawa	Okinawa Industrial Technology Center	Uruma City	Providing various technical services to support the resolution of technical issues and product development for companies located in Okinawa. Conducts experimental research for chemistry, food, ceramics, and machinery and metals.	098-929-0111	
	Okinawa Mold Technology Institute		Trains engineers, provides equipment, and conducts experimental research relating to molds	098-929-0280	
	Okinawa Health Biotechnology Research & Development Center		Incubation facility where companies can utilize research equipment to conduct bio health related research Helping to turn research results using biotechnology into businesses and products.	098-923-1768	
	Okinawa Biotechnology Business Support Center			098-934-8435	
	Okinawa Life Science Research Center		Conducts advanced research and development for pharmaceuticals and food with health-promoting benefits, utilizing the regional characteristics and biological resources of Okinawa (Satisfies physical containment (P2) safety requirements)	098-982-1060	
University of the Ryukyus	Molecular Life Science Research Facility	Nishihara Town	Functional Genomics; Molecular Biotechnology; Environmental and Biological Information; Vaccinology and Vaccine Immunology; and Molecular Microbiology	098-895-8943	
	Center for Research Advancement and Collaboration		Research and development, and collection and provision of information on analytics/measurement technologies	098-895-8967	
	University of the Ryukyus Center for the Promotion of Industry-Academic-Government Collaborations		The University of the Ryukyus research activities include supporting research and development with non-affiliated institutions outside the university, supporting the protection and utilization of intellectual property, and supporting enterprise.	098-895-8031 098-895-8597	

## Okinawa Institute of Science and Technology Graduate University (OIST)

The Okinawa Institute of Science and Technology Graduate University is a graduate university offering world-class research and educational standards in the field of natural sciences. It was established in November 2011, after receiving approval from the Ministry of Education, Culture, Sports, Science and Technology to establish an incorporated educational institution, and opened its doors in September 2012. For educational and research activities, interdisciplinary research projects that combine the fields of neuroscience, molecular, cellular, and developmental biology; mathematical and computational sciences; environmental and ecological sciences; physics; chemistry, and engineering and applied science are being carried out. It is anticipated that a cluster of intellectual industries will be formed around the facility by attracting corporate research institutes and venture companies.



## National Institute of Technology, Okinawa College

The National Institute of Technology, Okinawa College (NIT Okinawa) comprises four departments: Mechanical Systems Engineering, Information and Communications Systems Engineering, Media Information Engineering, and Bioresources Engineering. Through five years of consistent education, the college nurtures creative and practical engineers who can contribute to society with a highly humane, ethical, and international outlook in addition to expertise and technical training. With its solid educational system, NIT Okinawa is contributing to industrial growth in Okinawa through training programs and technology exchange/consultation opportunities in collaboration with local governments and industries.





### Details regarding incubation facilities, etc.



#### Okinawa Health Biotechnology Research & Development Center

The Okinawa Health Biotechnology Research & Development Center is an incubation facility that conducts research and development regarding health foods and pharmaceutical drugs, with the purpose of promoting industrial development in Okinawa.

Rental lab	Area (m <sup>2</sup> ):	20.32m <sup>2</sup> ~167.74m <sup>2</sup>	Inquiries:098-934-8435
	Rent (monthly):	¥2,160 per m <sup>2</sup>	Tenancy period: 5 years
	Number of rooms:	16	

#### Main support

- Explanations on operating equipment, technical consultations
- Advice on development of health food products and technical elements of ingredient analysis
- Support for commercialization, advice on product development

#### Main machinery and instruments



Okinawa Health Biotechnology Research & Development Center offers a variety of equipment that organizations can use to carry out research and development or improve their production technology. (Tax exemption for machine usage fees available)

Analysis instruments	Nuclear magnetic resonance apparatus, liquid chromatography quadrupole mass spectrometer, gas chromatography-mass spectrometer, time-of-flight tandem mass spectrometer, DNA sequencer, amino acid analyzer, etc.
Proof-of-concept equipment	Jar fermenter (90L, 600L), disk-type centrifugal separator, sterilizer, powder sterilization device, coarse grinder, pneumatic pulverizer, fine grinder, low-temperature dryer, etc.



#### Okinawa Bio Industries Center

Okinawa Bio Industries Center is a post incubation facility that offers support to businesses that are approaching the commercialization of research development and research results made using biotechnology, and we aim to further develop biotechnology related industries in Okinawa.

Rental lab	Area (m <sup>2</sup> ):	34m <sup>2</sup> ~232m <sup>2</sup>	Inquiries:098-923-1768
	Rent (monthly):	¥2,400 per m <sup>2</sup>	Tenancy period: no limit
	Number of rooms:	31	

#### Main support

- Okinawa Bio Industries Center provides various forms of support through its industry-academia-government collaboration network.
- Advice from experts about matters such as practical use and exploration of sales routes

#### Use of equipment

Okinawa Health Biotechnology Research & Development Center has analysis equipment on site for organizations to use. (Organizations may be eligible for a fee reduction or exemption.)



#### Okinawa Life Science Research Center

The Okinawa Life Science Research Center is a rental lab with the purpose of promoting and industrializing Okinawan technology in bio/life sciences that coordinates research and development with venture enterprises and research institutions, that has is the first P2 level facility for commercialization in the prefecture.

Rental lab	Area (m <sup>2</sup> ):	60.75m <sup>2</sup> ~243m <sup>2</sup>	Inquiries:098-982-1060
	Rent (monthly):	¥2,404 per m <sup>2</sup>	Tenancy period: less than 1 year (renewable)
	Number of rooms:	16	

#### Main support

- Support for entrepreneurs
- Okinawa Life Science Research Center provides various forms of support for companies relocating to Okinawa, including support for entrepreneurs who have relocated to Okinawa, support for promotional activities, and matching with potential partners.
- Support for companies
- 25% reduction of room rate for small and medium enterprises that have been in business for less than five years. \*Conditions apply

#### Use of equipment

Automated incubators, thermostatic shaking incubators, high-speed refrigerated centrifuges, centrifugal evaporators, microchip electrophoresis equipment, quadrupole mass spectrometers, pulse field electrophoresis equipment, low pressure chromatography, digital PCR, next-generation sequencer systems, animal testing facilities (with individual animal breeding control units), etc.

### Details regarding incubation facilities, etc.



#### Okinawa Institute of Science And Technology Graduate University (OIST)

Okinawa Institute of Science And Technology Graduate University (hereinafter referred to as OIST) aims to contribute to Okinawa's autonomous development and improving global science and technology through the implementation of internationally exceptional education and research regarding science and technology. Their innovation square/incubator aims to be a facility where entrepreneurs from OIST and anywhere from both Japan and the world, can collaborate with preexisting businesses and investors, to help realize innovation and visions regarding the ecosystem.

#### Rental lab

Area (m <sup>2</sup> ):	20m <sup>2</sup> ~25m <sup>2</sup>
Rent (monthly):	¥7,080~84,000
*You can rent by room, or by desk or bench	
*Membership fees not included	
*Organizations must sign up for membership to use the equipment.	
Inquiries:	incubator-help@oist.jp

#### Facility/service fee list

Type	Monthly
Exclusive desk	¥ 7,080
Exclusive office (20m <sup>2</sup> )	¥ 51,200
Lab bench	¥ 22,200
Exclusive lab (25m <sup>2</sup> )	¥ 84,000
Membership fee (per individual)	¥ 2,500



OIST website

#### Shared facilities and equipment

- Shared research equipment (refrigerators, culturing equipment, centrifugal separators)
- Meeting rooms for up to 8 people (Zoom conference equipment, projector, screen)
- Event space for up to 25 people (40m<sup>2</sup>)
- Conference rooms in OIST Conference Center (Access to event space (additional usage fee applies))
- Wi-Fi, multifunction printers
- Soundproofed phone booths
- Shared kitchen
- Parking area

#### Services for members

- Access to members' and investors' network
- Participation in entrepreneur development events held by OIST
- Access to the café and convenience store on campus
- Access to OIST's shared equipment (additional usage fee applies)
- Registration
- Posting on OIST website
- Access to experts for patenting, funding and staffing



#### University of the Ryukyus Center for the Promotion of Industry-Academic-Government Collaborations

University of the Ryukyus' research activities include support for research and development by outside organizations (such as those in the private sector), support for protection and use of intellectual property, and support for companies. The purpose of this work is to contribute to regional development and vitalization of the university's education, research and development activities.

#### Fees, etc.

- 1) Use of the building for industry-academia-government collaborations: 1,570 yen per m<sup>2</sup> per month (including utilities)  
Office area only: 11 rooms, 17-66m<sup>2</sup> Laboratories: 2 rooms, 10.5m<sup>2</sup>, 21m<sup>2</sup>
  - 2) General regional revitalization research building: 1,620 yen per m<sup>2</sup> per month (excluding utilities)  
Office area only: 11 rooms, 21-42m<sup>2</sup> Laboratories: 2 rooms, 20m<sup>2</sup>, 41m<sup>2</sup>
- Both buildings are for industry-academia-government collaboration activities conducted at University of the Ryukyus, and are available for joint research between outside organizations such as private companies and faculty and other parties affiliated with the university (including students) or for application of research results.

\*Applications to use the facilities in the 2023 academic year are now closed, but may reopen later if a room becomes available.



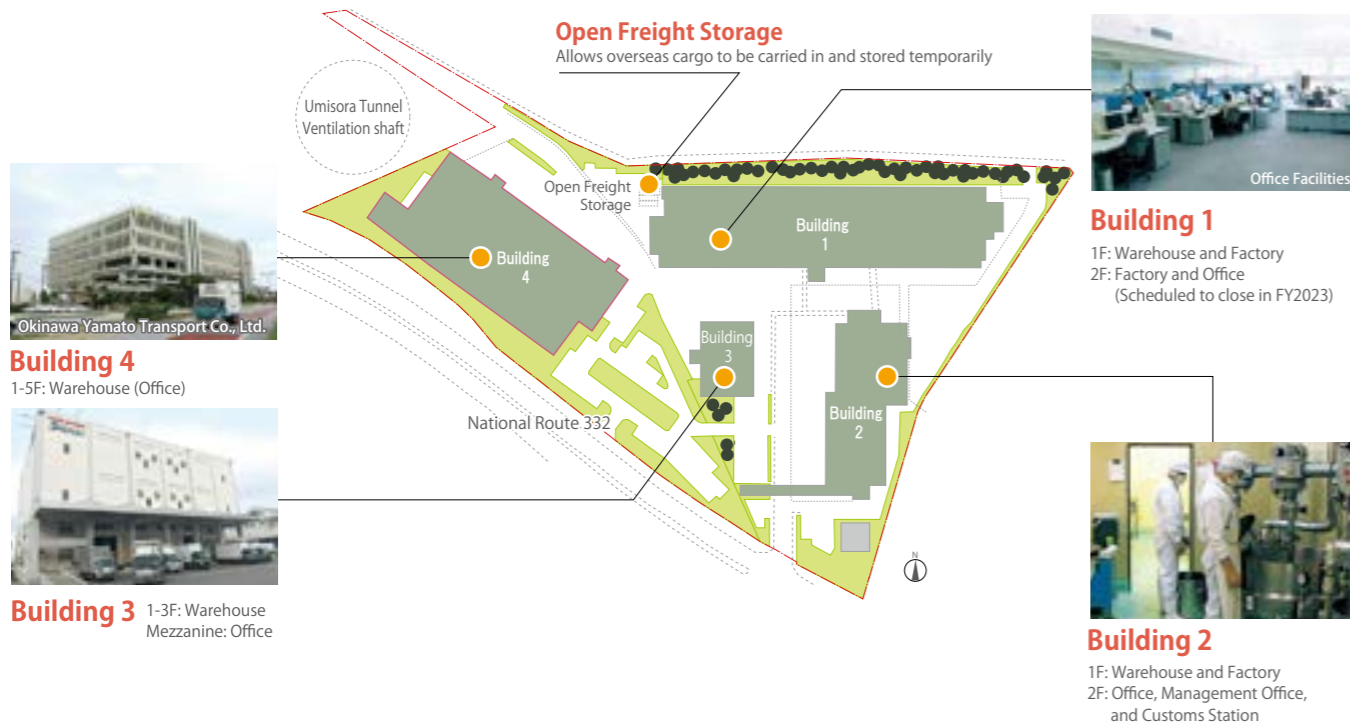
# 15 Local Businesses (International Logistics Hub Industrial Agglomeration Area Naha)

10 local businesses (excluding duplicates) (as of April 2023)

## List of Companies Present (as of April 2023)

Building Number	Number of companies	Company Name	Business Types	Industry	Occupancy Date
Building 1	1	Taira Trading Company	Souvenir Wholesale	Wholesale Industry	July 1st, 1988
	2	Okinawa Clover	Manufacturing of Canned Vegetables and Preserved Agricultural Foods	Manufacturing Industry	November 1st, 1994
	3	Okinawa Kuyu	Import Agent (Customs) and Assembly and Shipping of Air Cargo	Land Freight Transportation Industry	June 1st, 2002
Building 2	4	Nihon Kurumaebi Youshoku	Import, Wholesale, and Manufacturing of Agricultural, Livestock, and Marine Products	Wholesale Industry	July 1st, 1988
	-	Okinawa Kuyu	Import Agent (Customs) and Assembly and Shipping of Air Cargo	Land Freight Transportation Industry	June 1st, 2002
	5	Nissin	Creation of Import and Export Documents and Customer Support	Trade Support Industry	May 20th, 2010
	6	Project Ryukyu	Import, Export, and Sales of Electronic Devices	Wholesale Industry	July 1st, 2013
	7	STO Express Japan	Customs and Operations for Cargo Transport Between Japan and China	Trade Support Industry	November 17th, 2014
Building 3	8	Sojitz Royal In-flight Catering Co., Ltd.	Manufacturing of In-flight Meals	Manufacturing Industry	December 1st, 2014
	9	Anshin	Automobile Transport and Warehousing of General Cargo	Land Freight Transportation Industry	September 1st, 2016
Building 4	10	Okinawa Yamato Transport Co., Ltd.	Automobile Transport, Distribution Transport, and Warehousing of General Cargo	Land Freight Transportation Industry	January 15th, 2013

## Site for the Facilities (area of 40,266.94m<sup>2</sup>)



# 16 Local Businesses (formerly the Special Free Trade Zone)

84 local businesses (excluding duplicates) (as of February 2023)

[Breakdown]

- Rental factories for general manufacturing : 38 companies (Of which 1 company is a repetition.)
- Rental factories for highly technical manufacturing : 5 companies
- Rental factories for forges and foundries : 11 companies
- Subdivided land : 33 companies (Of which there is 4 companies are repetitions.)

## Local business list (as of February 2023)

Name	Building number/ classification	Industry type	Company name	Description of Business	Date of establishment
Rental factory	# 1	Manufacturing	Daikyo Giken-Kogyo Co., Ltd.	Industrial adhesive manufacturing	Feb. 2007
	# 2	Manufacturing	Sankikatawaku Kogyo Co., Ltd.	Wooden concrete mold manufacturing and sales	Mar. 2016
	# 3	Manufacturing	SOK Co., Ltd.	Semiconductor manufacturing equipment part (flow guage) manufacturing	Oct. 2010
	# 4	Manufacturing	Okinawa Tokyo Keiso Co., Ltd.	Semiconductor manufacturing equipment flow guage manufacturing	Jul. 2011
	# 6	Manufacturing	Shiba Sangyo Co., Ltd.	Wooden housing precut manufacturing/sales	Jun. 2015
	# 7	Manufacturing	Nippura Co., Ltd.	Large aquarium acrylic panel manufacturing	Nov. 2003
	# 8	Manufacturing	NMT Co., Ltd.	Manufacture and sale of precision polishing jigs for silicon wafers, etc. for semiconductors	Nov. 2006
	# 9	Manufacturing	Cellmedica Co., Ltd.	Manufacture of fucoxanthin (a brown algae carotenoid pigment)	Oct. 2019
	# 10	Manufacturing	Masahiro Distillery Co., Ltd.	Production and sale of liqueur made from awamori	Oct. 2021
	# 11	Manufacturing	Uminchu Okinawa Co., Ltd.	Manufacturing and sales of original T-shirts	Sep. 2003
	# 14	Manufacturing	NTI Co., Ltd.	Development and manufacturing of motor vehicle parts (carbon nano-tubes), and plastic mold prototype production	Feb. 2013
	# 16	Manufacturing	EM Research Organization Co., Ltd.	Manufacturing and sales of beverages	May 2010
	# 17	Manufacturing	Advance Co., Ltd.	Processing and manufacturing precision equipment for copying machines, digital cameras, automobile parts, and metallic product prototypes	Nov. 2012
	# 18	Manufacturing	Ryukyu Beverage Co., Ltd.	Manufacturing and sales of beverages	Apr. 2014
	# 19	Manufacturing	Presea Co., Ltd.	Manufacturing and sales of processed products, such as carbon for items such as high temperature vacuum furnace components, and semiconductor components	Mar. 2006
	# 20	Manufacturing	Toy Factory International Co., Ltd.	Development and manufacturing of camping and special use vehicles	Feb. 2008
	# 21	Manufacturing	Okinawa Kubota Chemix Co., Ltd.	Synthetic resin pipe manufacturing	Oct. 2015
	# 22	Manufacturing	SPARK Ltd.	Manufacture, sales, and tuning of air guns and air gun-related products; wholesaling of related products	Aug. 2021
	# 23	Manufacturing	Fujitaka Creation Co., Ltd.	Manufacturing and sale of clothing and accessories	Oct. 2014
	# 24	Manufacturing	Nanosystem Solutions Co., Ltd.	Development and manufacturing of semiconductor inspection equipment, and maskless exposure apparatuses	Sep. 2014
	# 25	Manufacturing	Ume Kobo	Manufacturing of confectionery	May 2016
	# 26	Manufacturing	Nissho Inc.	General aluminum construction material and residential equipment manufacturing	Feb. 2015
	# 28	Manufacturing	Enrich Food Co., Ltd.	Manufacturing refrigerating technology using proton freezing and frozen foods made using it	Feb. 2015
	# 29 ①	Manufacturing	Accord Co., Ltd.	Manufacturing and sale of industrial machinery/ covers for machine tools	Jan. 2018



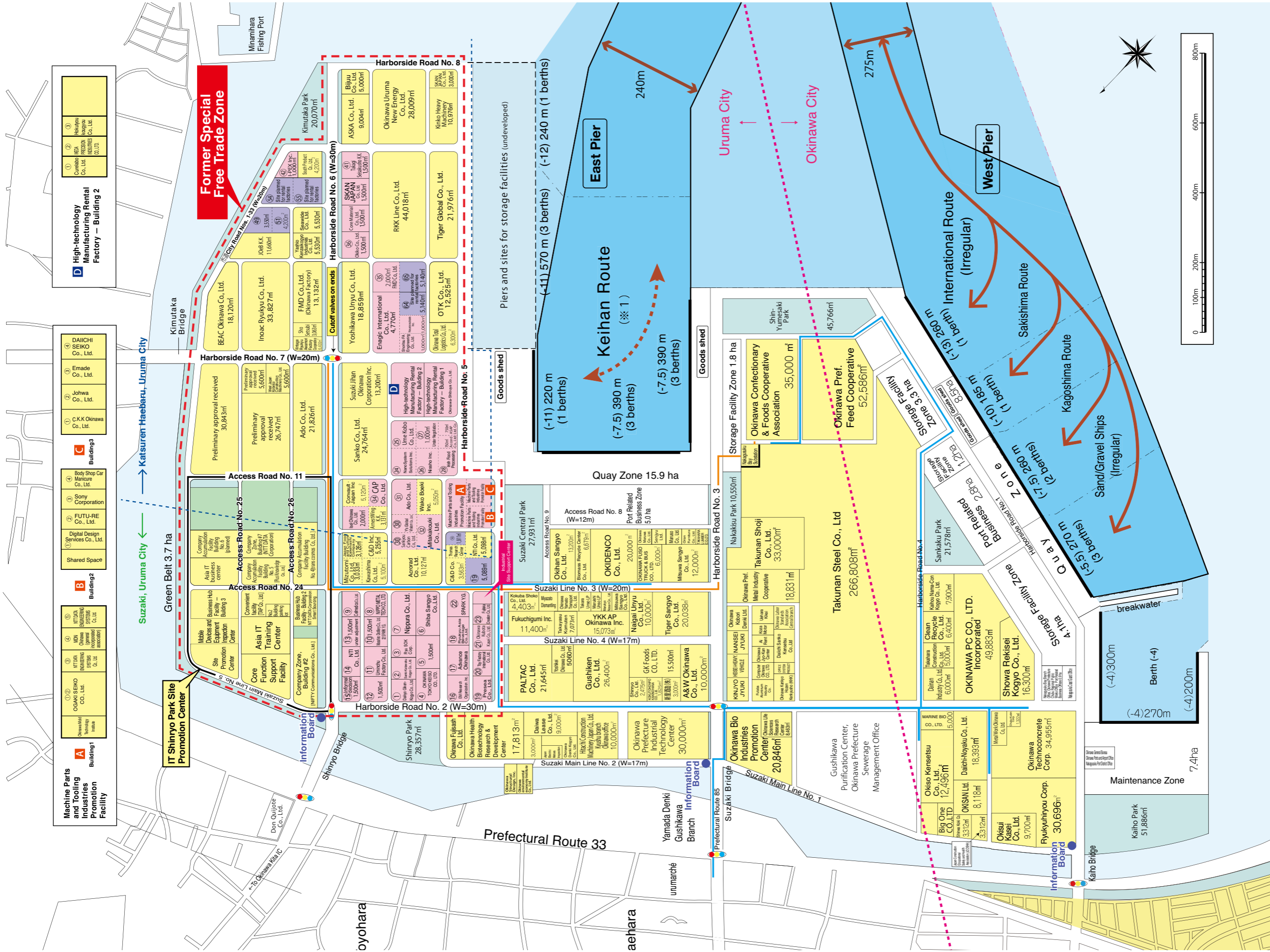
Name	Building #, Classification, etc.	Industry type	Company name	Description of Business	Date of establishment
Rental factory	#29②	Manufacturing	ASAP Ltd. Co.	Manufacturing of semiconductor manufacturing equipment	Sep. 2018
	#30①	Manufacturing	Sankyou Carbon Co., Ltd.	Manufacture of carbon and graphite products	Apr. 2017
	#30②	Manufacturing	Waqua Inc.	Manufacturing and sales of household water purifiers and small-scale desalination equipment	Mar. 2016
	#31	Manufacturing	ADO Co., Ltd.	Manufacture of electromagnetic valves and flow sensors for medical equipment (dialysis machines, etc.)	Feb. 2016
	#32	Manufacturing	Mitaka Koki Ltd. Co., Ltd.	Manufacturing of medical optical equipment (microscopes for surgery, etc.)	Oct. 2016
	#33	Manufacturing	Isei Okinawa Co., Ltd.	Manufacture of elemental parts (Million Guide) for semiconductors, liquid crystals, organic ELs and more manufacturing equipment components	Jun. 2018
	#34	Manufacturing	CAP Co., Ltd.	Manufacturing and sales of semiconductor/printed circuit board manufacturing equipment	Jul. 2016
	#35	Manufacturing	FMD .Co., Ltd.	Development and manufacture of medical devices (guidewires)	Nov. 2019
	#36	Manufacturing	Okiko Co., Ltd.	Bread and confectionery manufacturing industry	Jun. 2021
	#37	Manufacturing	Core Material Co., Ltd.	Production of plastic and resin medical products	May 2022
	#38	Manufacturing	SKAN JAPAN Co., Ltd.	Manufacture and sale of pharmaceutical product (isolator) manufacturing equipment	Aug. 2019
	#39	Manufacturing	Shoritsu FA Engineering Co., Ltd.	Manufacturing of electrical tools and equipment (in-line type/cell production soldering device)	May 2018
	#40	Manufacturing	Neuroceuticals Okinawa Inc.	Manufacture of medical devices (guidewires), and sub-contracts for sterilization inspections of medical equipment	Jun. 2018
	#41	Manufacturing	Takagi Seisakusho K.K.	Automotive parts/accessories manufacturing industry	Apr. 2021
	#42	Manufacturing	I-PEX Inc.	Production of press molded parts and automated equipment	Apr. 2022
Leased factories for high-tech manufacturing	#1	Manufacturing	Okinawa-Shibuya Co., Ltd.	Manufacture of semiconductor inspection equipment, etc. and parts for bottling systems, etc.	Aug. 2013
	#2 Section 1	Manufacturing	Curelabo Co., Ltd.	Bagasse powder production	Feb. 2023
	#2 Section 2	Manufacturing	Ikeda Precision Industries Co., Ltd.	Processing and production of manufacturing machinery and equipment parts (stainless steel)	Aug. 2013
	#2 Section 3	Manufacturing	Hokutyou Industries Co., Ltd.	Manufacturing and sales of various industrial plastic parts such as food machines, medical apparatus, pharmaceutical apparatus, and machine tools	Aug. 2013
	#3	Manufacturing	Enagic International	Development, manufacturing, and sale of medical and healthcare devices	Feb. 2022
Support facilities for forges and foundries	# 1 Section 1+2	Manufacturing	Ogaki Seiko Co., Ltd.	Manufacturing and sales of honeycomb catalyst converters (exhaust) for automobiles, industrial machinery, and electronic parts	Dec. 2010
	# 1 Section 3	Information and service industry	NTT DATA Engineering Systems Co., Ltd.	Design and production of CAD/Cam for molds	Dec. 2011
	# 1 Section 4	Manufacturing	Monozukuri Network Okinawa Inc. (One company)	Human resource development for manufacturing, research and development, and contract processing,engineering	Mar. 2012
	# 1 Section 5	Information and service industry	NTT DATA Engineering Systems Co., Ltd.	Development of automated processing systems, etc.	Apr. 2020
	# 2 Section 1	IT & Prototypes & Development	Digital Design Service Co., Ltd.	Mold design CAD, human resource development	Feb. 2015
	# 2 Section 2	Information and service industry	FUTU-RE Co., Ltd.	Development of automatic driving systems	Apr. 2022
	# 2 Section 3	Manufacturing	SONY Group Corporation	Vehicle development	Sep. 2020
	# 2 Section 4	Manufacturing	Body Shop Car Manicure Co., Ltd.	Manufacture of FRP automobile parts	Feb. 2020
	# 3 Section 1	Manufacturing	CKK Okinawa Co., Ltd.	Manufacturing and regrinding of carbide drills and endmills	Jan. 2016
	# 3 Section 2	Manufacturing	Jowa Co., Ltd.	Manufacturing of machine parts comprised of stainless steel, aluminum, resin, etc. and design/production of press molds	Jan. 2015
	# 3 Section 3	Manufacturing	Emade Co., Ltd.	Manufacturing of electric car parts and special car parts	Sep. 2017
	# 3 Section 4	Manufacturing	I-PEX Co., Ltd.	The manufacture of high-speed press molds	Apr. 2019

Name		Industry type	Company name	Description of Business	Date of establishment
Land for sale/rental	1	Manufacturing	Acrorad Co., Ltd.	Manufacturing of semiconductors for radiation detection	Oct. 1999
	2	Manufacturing	Convault Japan Co., Ltd.	Manufacturing and sale of ground-mounted fuel tanks	May 2003
	3	Wholesale	Wako Trading Co., Ltd.	Print processing and wholesale of products such as T-shirts	Feb. 2006
	4	Manufacturing	Ryukyu Awamori Sake Village (Cooperative Association)	Production of traditional Awamori sake through long-term storage and sales of this beverage	Apr. 2011
	5	Manufacturing	NTI Co., Ltd.	Development and manufacturing of carbon nanotubes (CNT) related products and the manufacturing of plastic mold prototypes	Feb. 2013
	6	Wholesale	C & D Co., Ltd.	Wholesale sales of imported furniture, building materials, etc.	Feb. 2013
	7	Engineering Institute	Thomas GK Technical Research Institute Co., Ltd.	Research, development, design, and sales of environmentally-conscious incinerators	Oct. 2013
	8	Manufacturing	Japan Food and Culture Kakehashi Company Co., Ltd.	Manufacturing and sales of processed products derived from domestic agriculture, forests, and marine resources	Jan. 2015
	9	Manufacturing	Kawashima Group Co., Ltd.	Manufacturing of healthy food	Jul. 2015
	10	Manufacturing	SKAN JAPAN Co., Ltd.	Manufacturing and sales of pharmaceutical manufacturing machines (isolators)	Mar. 2016
	11	Special real estate leasing	Ryukyu Kaiun Kaisha Sea Transport Company Co., Ltd.	Operation of a 3-temperature zone distributio center	Mar. 2017
		Warehouse	Ryukkai Logistics Co., Ltd.	Operation of a 3-temperature zone distributio center	
	12	Manufacturing	BEAC Okinawa Co., Ltd.	Manufacturing equipment for manufacturing, electronic components (flexible printed circuit, boards)	Mar. 2017
	13	Wholesale	Kobelco Construction Machinery Japan Co., Ltd.	Sales and maintenance of new/used cars for civil engineering and construction	Mar. 2017
	14	Manufacturing	FMD Co., Ltd. (Okinawa Factory)	Manufacturing of guide wires for endovascular treatment	May 2017
	15	Manufacturing	INOAC Ryukyu Co., Ltd.	Manufacturing of urethane foam (bedding, furniture, industrial materials, etc.) and related products	Sep. 2017
	16	Electricity industry	Okinawa Uruma New Energy Co., Ltd.	Operations of biomass power plants	Oct. 2017
	17	Wholesale	Suzuki Jihan Automobiles Okinawa Co., Ltd.	Vehicle storage yard and vehicle delivery/maintenance (commercialization plant)	Nov. 2017
		Special real estate leasing	Yoshikawa Transport Co., Ltd.	Sales warehouse rentals	
	18	Warehouse	Maruyama Logistics Co., Ltd.	Operation of a sales warehouse	Feb. 2017
		Warehouse	Maruyama Logistics Co., Ltd.	Operation of a sales warehouse	
	19	Manufacturing	MIZUTOMI Corporation	Manufacturing of food products (meat, etc.)	Jan. 2018
	20	Road freight transport industry	Okinawa Total Logistics Co., Ltd.	Transportation of materials and machine tools	Mar. 2018
	21	Manufacturing	Yashio Kenzaikogyo Industries Co., Ltd.	Manufacturing of metal products for construction	Apr. 2018
	22	Wholesale	Seawide Co., Ltd.	Building materials wholesale	Jul. 2018
	23	Manufacturing	Bijuu Co., Ltd.	Manufacturing of confectionery products and contract manufacturing	Aug. 2018
	24	Manufacturing	South Product Co., Ltd.	Manufacturing of fucoidan and health foods	Aug. 2018
	25	Manufacturing	ADO Co., Ltd.	Manufacturing of solenoid valves and flow sensors for equipment used in medical/enviromental analysis	Jan. 2019
	26	Manufacturing	Tiger Global Co., Ltd.	Manufacture of rotary penetration steel pipe piles for building foundations, plastic products, etc.	Jun. 2019
	27	Warehouse	OTK Co., Ltd.	Operation of a sales warehouse	Mar. 2020
	28	Wholesale	ArnestWing K.K.	Architectural and civil engineering work; building materials wholesale business	Feb. 2021
	29	Warehouse	C&D Inc.	Work related to purchasing, management, and transport of imported furniture, etc.	Feb. 2021
	30	Manufacturing	JOeB K.K.	Manufacture of electrically assisted bicycles (e-bikes)	Oct. 2021
31	Manufacturing	Sanko Co., Ltd.	Manufacturing of plastic materials handling equipment	Mar. 2022	
32	Manufacturing	ASKA Co., Ltd.	Design, manufacturing, and export of equipment for automated assembly lines of automotive parts	Mar. 2022	
33	Wholesale	Kinko Heavy Machinery	Wholesale of construction and mining machinery	Mar. 2022	



# 17. International Distribution Base and Industry Cluster Zone Uruma and Okinawa City MAP

(as of February 2023)



- ※ 1 Keihan Route  
 Naha New Port →  
 Nakagusuku New Port →  
 Osaka Nanko → Tokyo Ariake  
 Port → Osaka Nanko → Naha  
 New Port
- Former Special Free Trade Zone 122.4ha  
 ○ Former General Industrial Site 102.6ha  
 ○ Road  
 ○ Adjacent to the prefectural road (Okinawa Ring Road). 2 km to National Route No. 329  
 ○ 4 km to Okinawa Expressway (Okinawa-Kita IC)  
 ○ Airport 27 km to Naha Airport (Type 2, within the prefecture, domestic and international routes)  
 ○ Harbor 22 km to Naha Port  
 ○ City planning  
 ○ Quasi industrial zone: Building coverage ratio: 60%. Floor-area ratio: 200%  
 ○ sub-divided district  
 ○ leased factory  
 ○ 22 KV supply line
- Business entity Okinawa Prefecture  
 ○ Location Okinawa-shi, Uruma-shi  
 ○ Total landfill area 393 ha (primary landfill 180 ha, secondary landfill 147 ha, tertiary landfill 66 ha)  
 ○ Harbor West Pier water depth 13 m (40,000 D/W class), 1 berth, extension 260 m  
 ○ Harbor West Pier water depth 10 m (15,000 D/W class), 1 berth, extension 183 m  
 ○ Harbor West Pier water depth 7.5 m (5,000 D/W class), 2 berths, extension 260 m  
 ○ Harbor West Pier water depth 5.5 m (2,000 D/W class), 3 berths, extension 270 m  
 ○ East Pier interim service
- Overview of the new port district